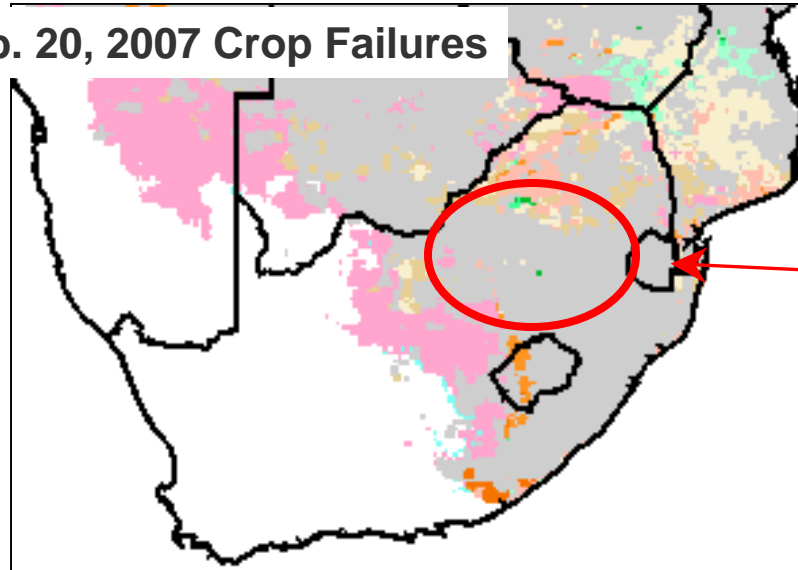


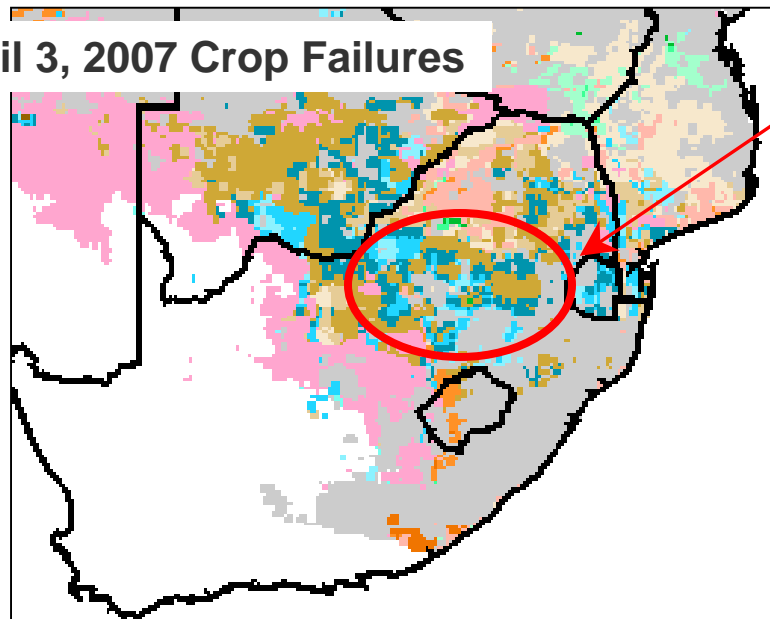
# Corn crop wilts and dies from prolonged dryness during January - March 2007

Feb. 20, 2007 Crop Failures



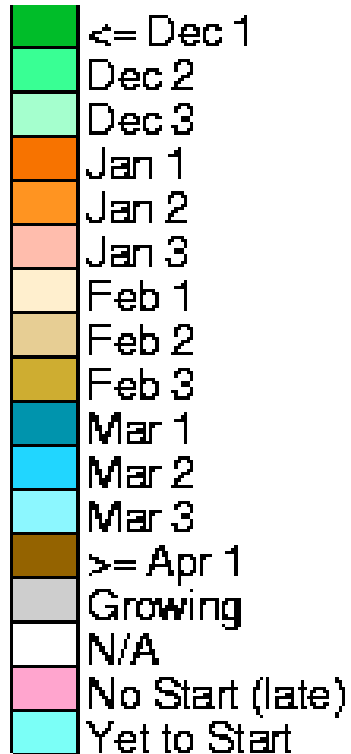
Corn was water-stressed in mid-February with crop failure imminent.

April 3, 2007 Crop Failures



Crop failures begin at end of February and continue through March, 2007.

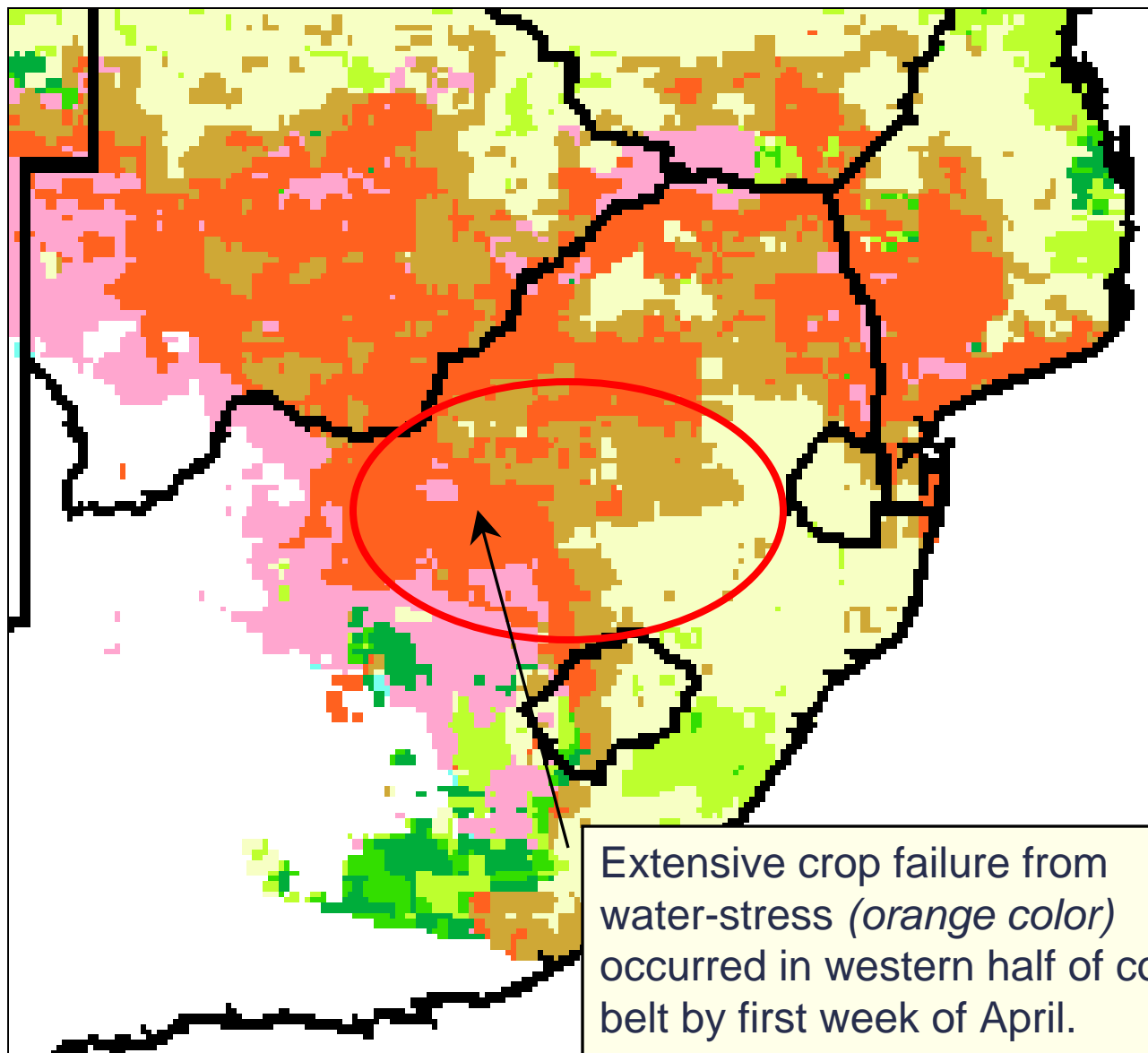
## Acute Failure



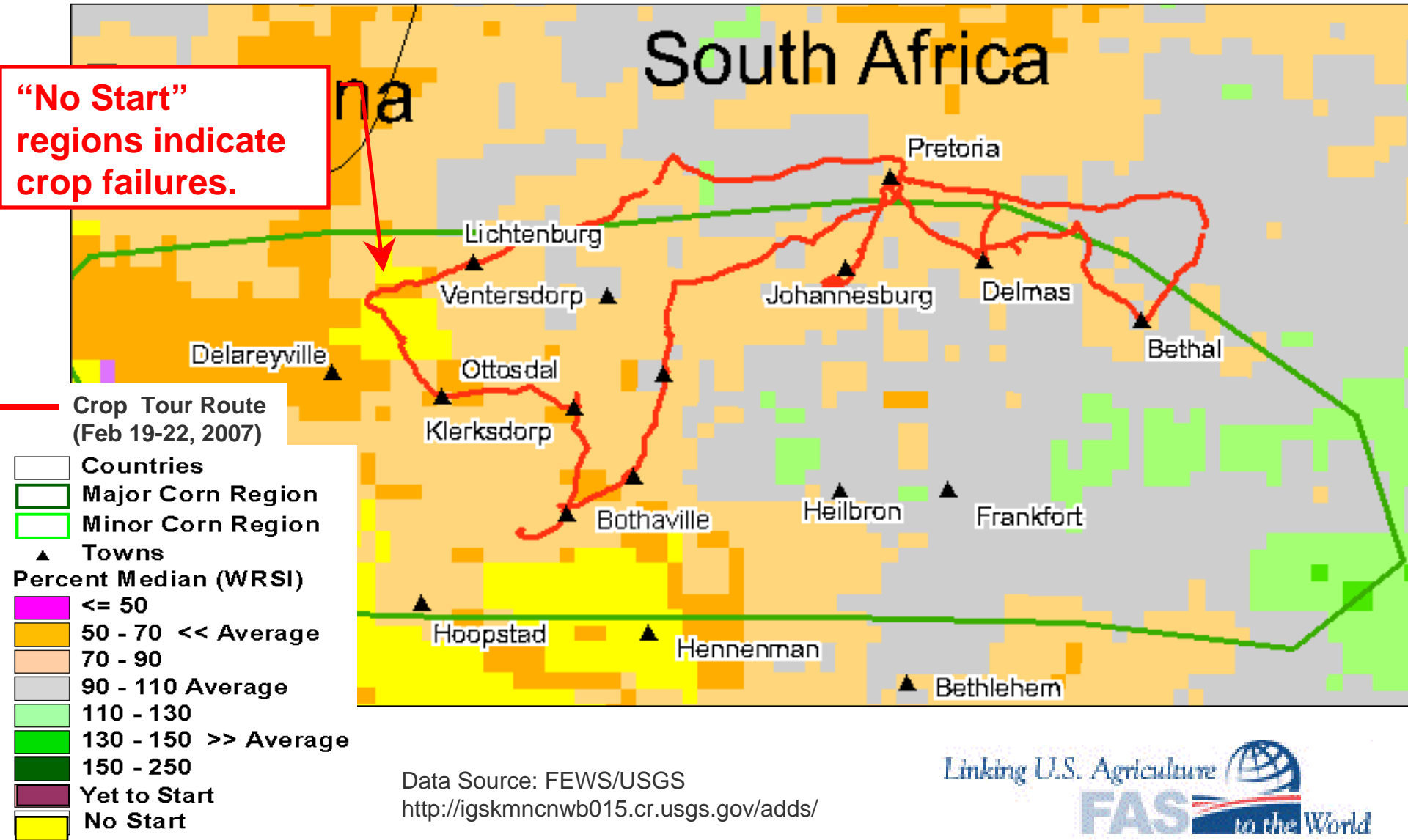
Data Source: FEWS/USGS  
<http://igskmncnwb015.cr.usgs.gov/adds/>

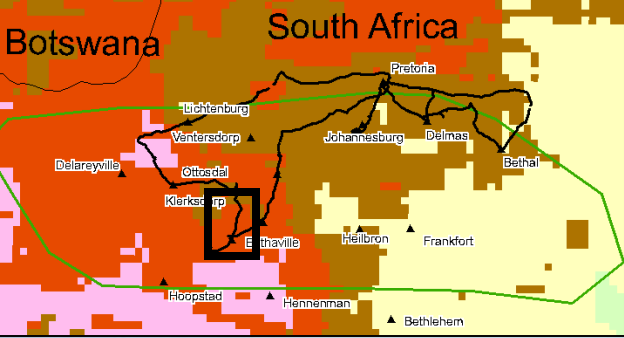
# Extensive crop failure by first week of April, 2007

## Crop condition Maize:2007-04-03



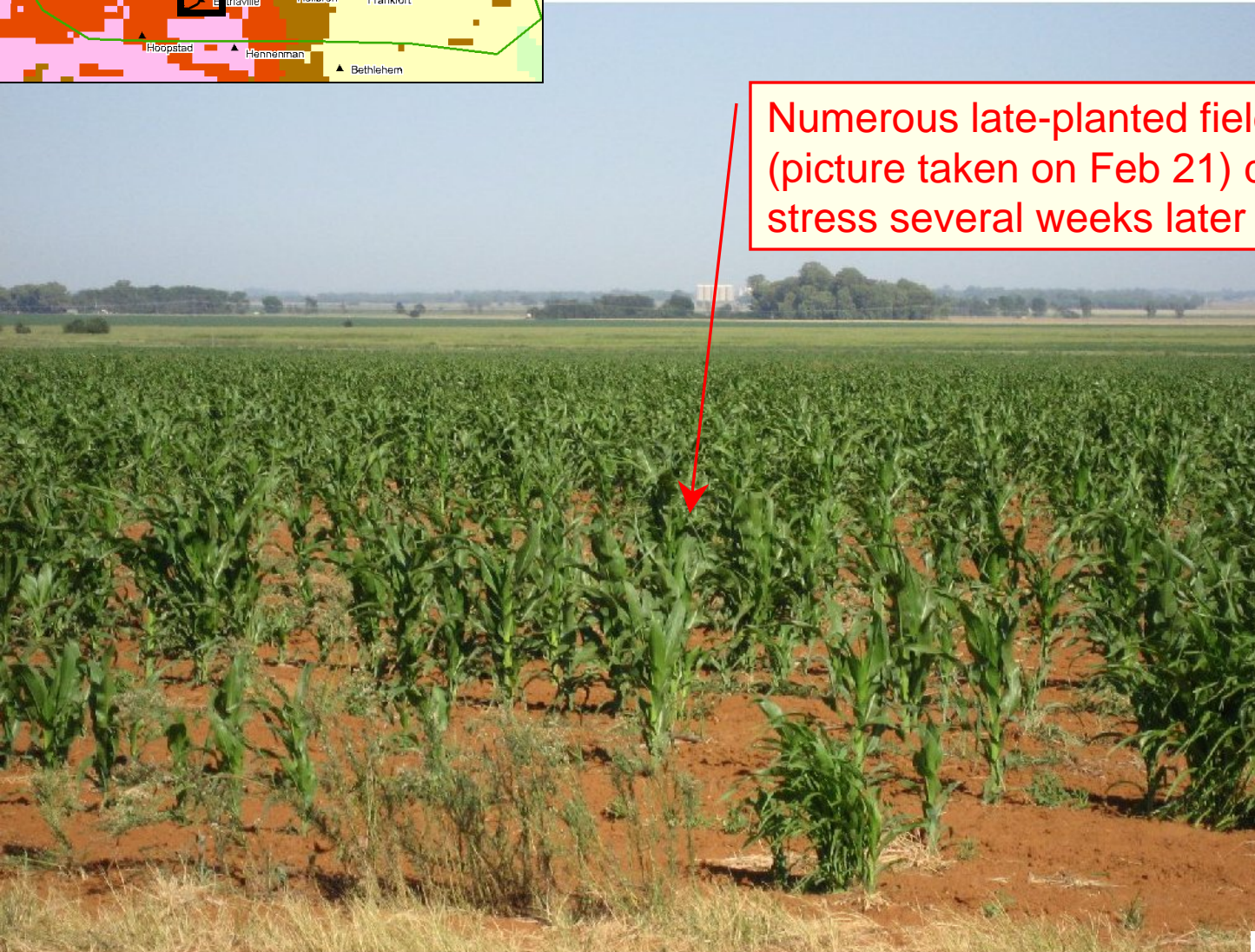
# WRSI (Relative Yield on March 20, 2007) Extended to End-of Season (EOS)



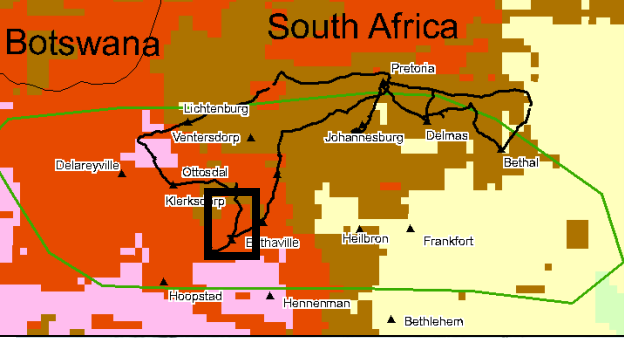


# Representative Field Taken 15-minutes Before Arriving at Viljoenskroon

Numerous late-planted fields of this type (picture taken on Feb 21) died from water stress several weeks later in March, 2007.







# Representative Field Taken 30-minutes Before Arriving at Viljoenskroon

Numerous late-planted fields of this type (picture taken on Feb 21) wilted and died several weeks later in March, 2007.



S 27° 21.394' E 026° 38.684'

4301 ft

02/21/2007 8:32:27 AM