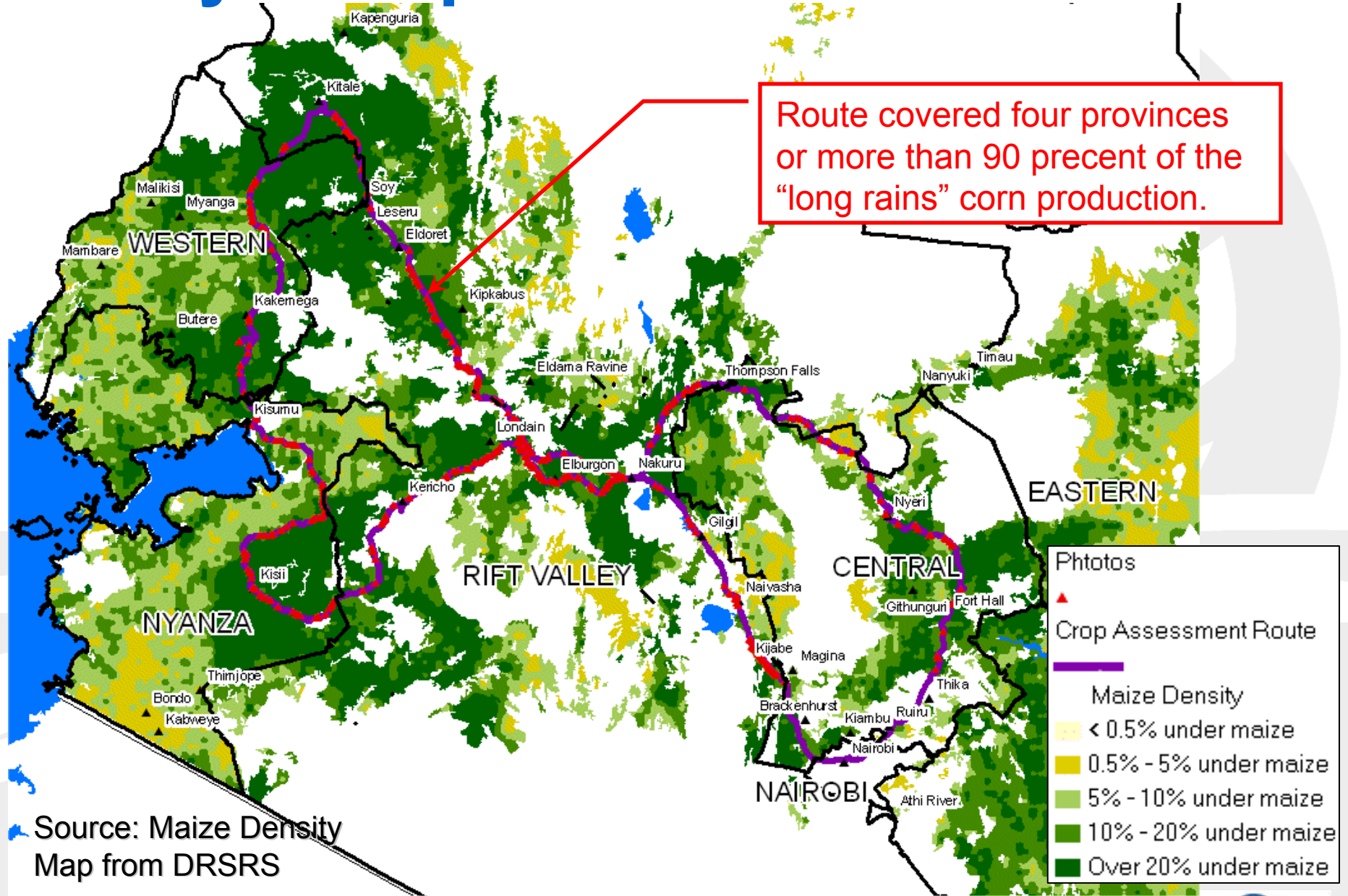
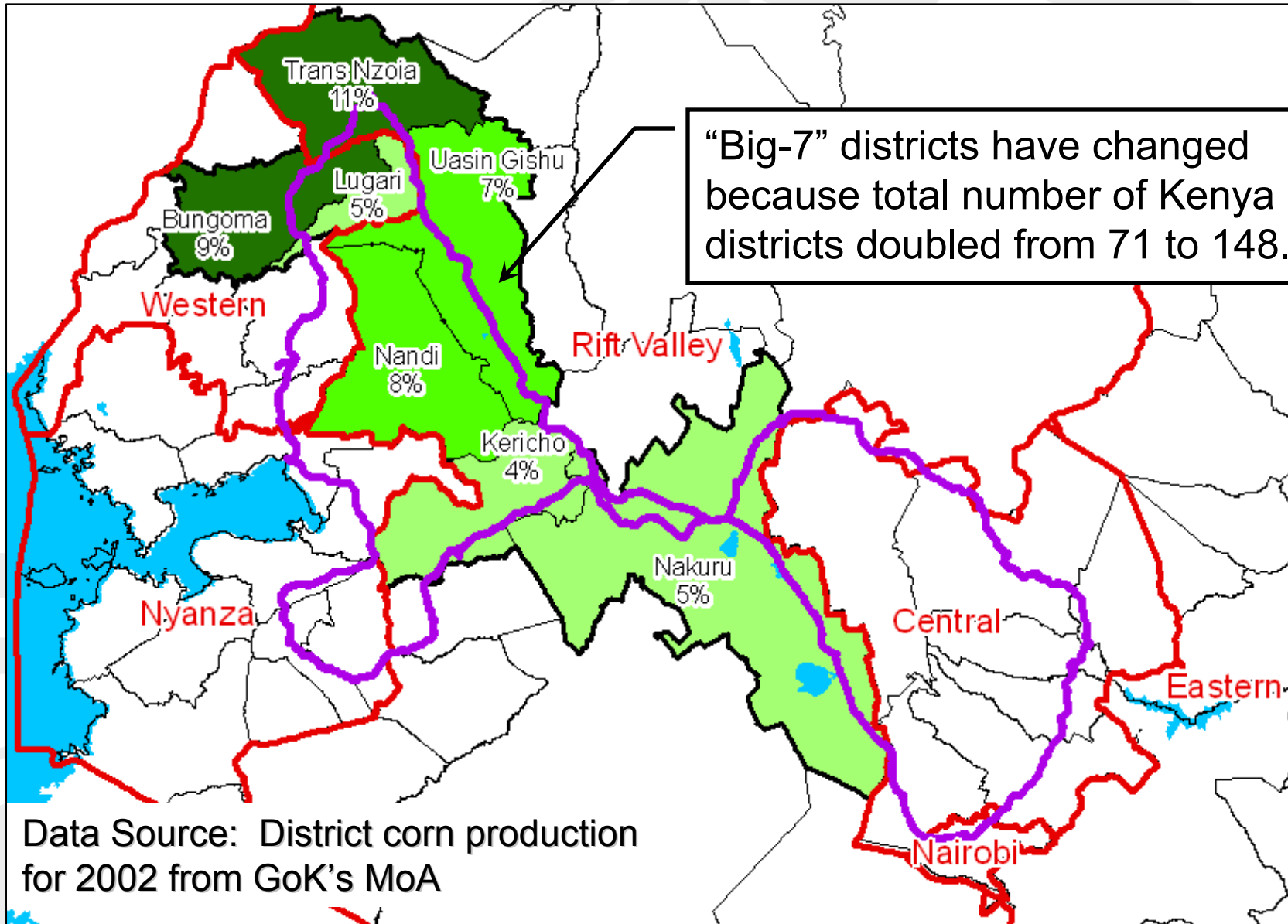


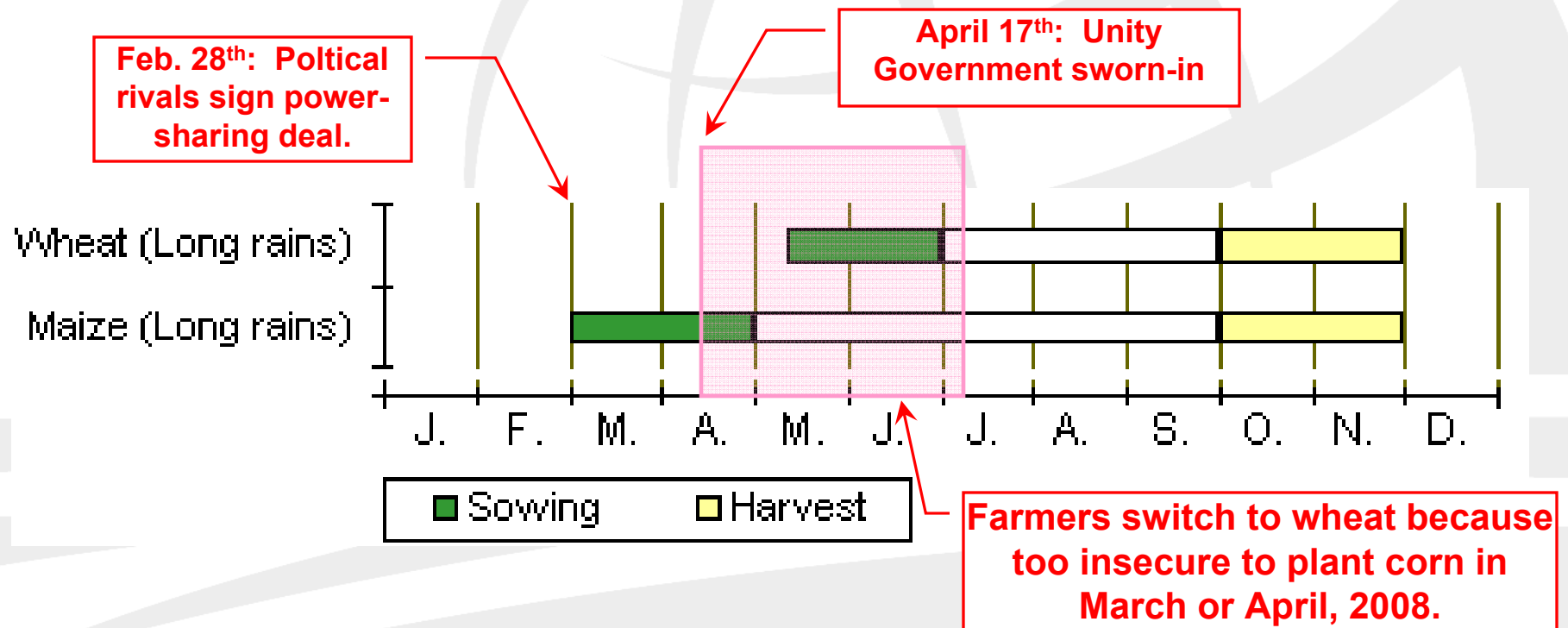
Kenya Crop Assessment Route



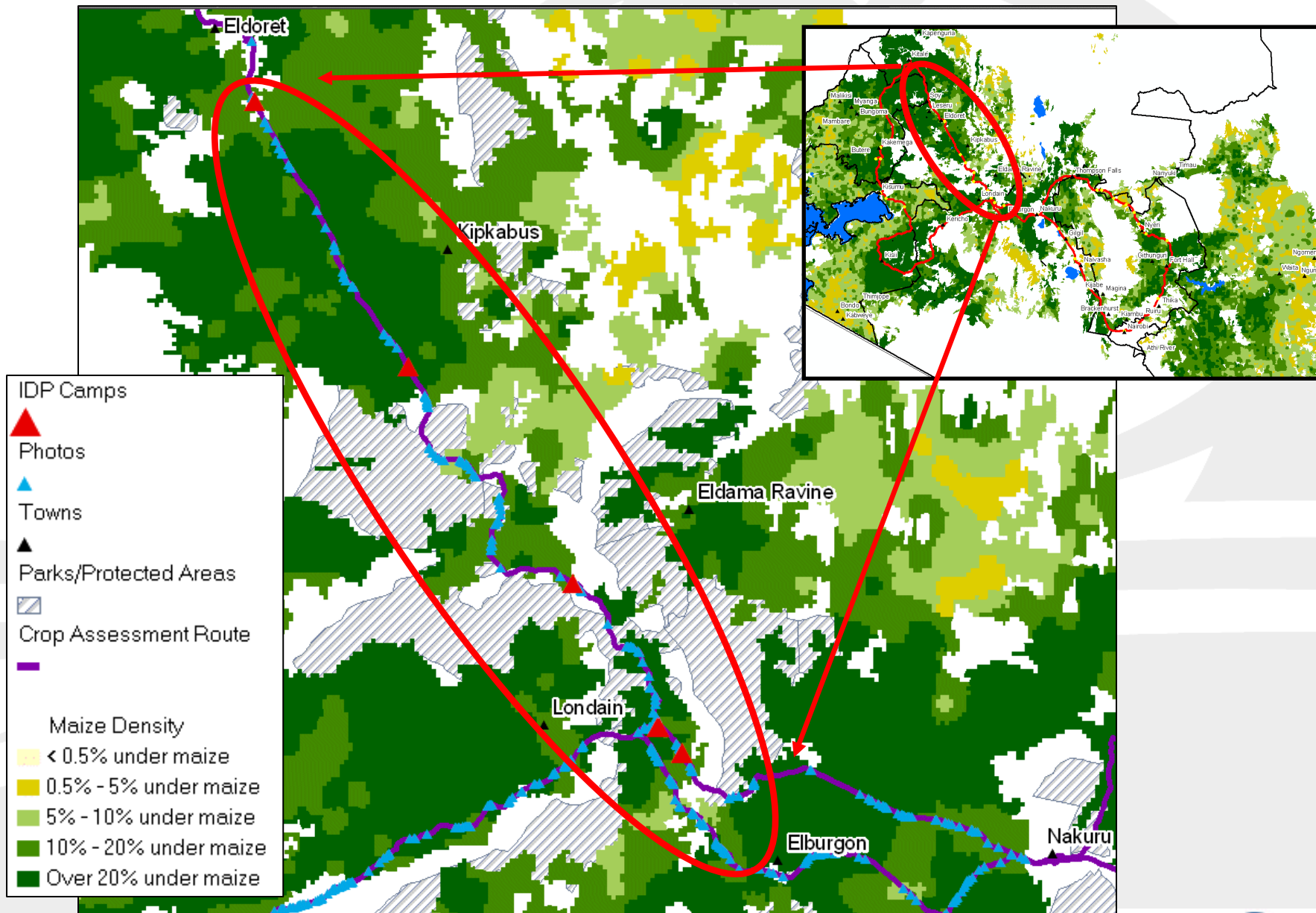
Kenya's "Grain Basket" or "Big-7" Districts



Post-Election Violence (PEV) Timeline

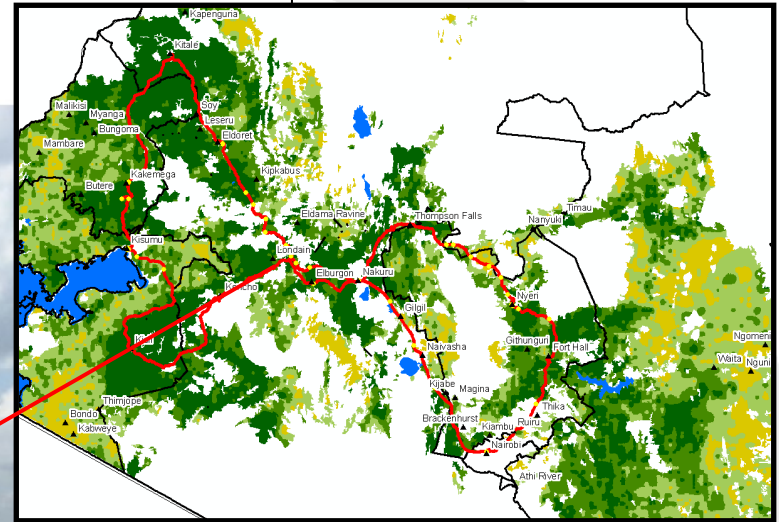


PEV Hot Spot within "Grain-Basket"



Shops Burned to the Ground

FEWS NET/USDA Kenya Crop Assessment (July 2008)

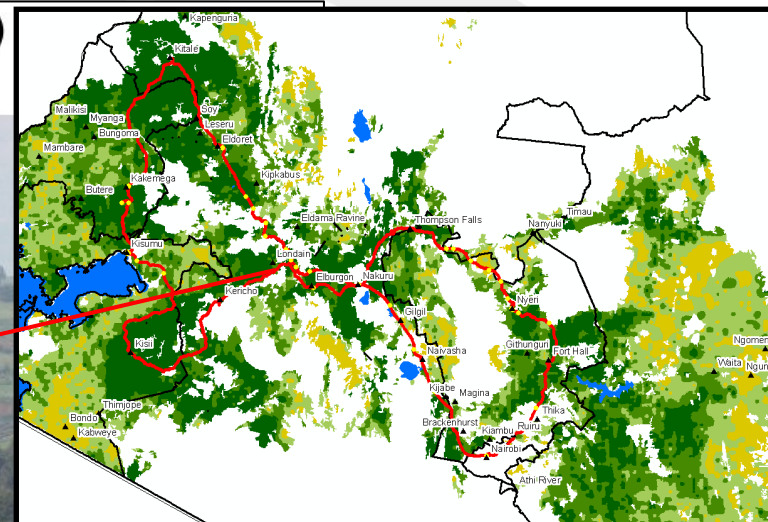


S 00° 09.539' E 035° 41.522' 2543 m 07/01/2008 10:45:30 AM

USDA/FAS/OGA

Wheat Being Planted (bare soil in background)

FEWS NET/USDA Kenya Crop Assessment (July 2008)

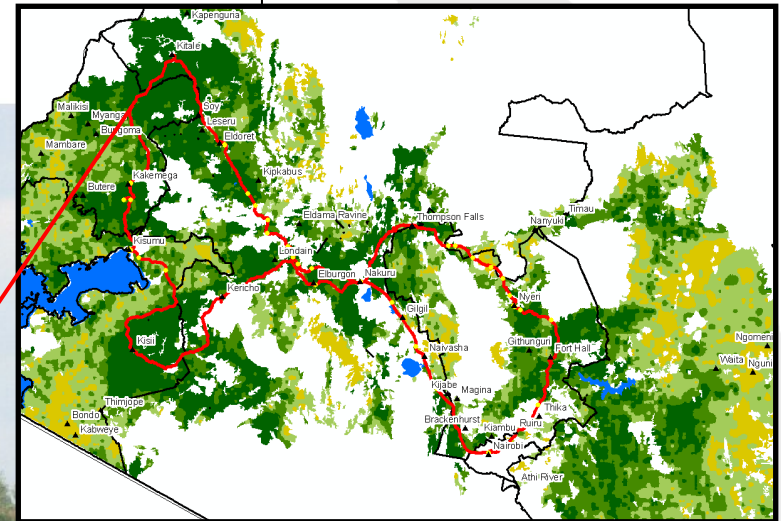


S 00° 09.610' E 035° 40.616' 2561 m 07/01/2008 10:50:26 AM

USDA/FAS/OGA

“Green Revolution” has arrived in Kenya’s “grain basket” where yields are approaching 5 tons/hectare in Trans Nzoia & Uasin Gishu districts.

FEWS NET/USDA Kenya Crop Assessment (July 2008)

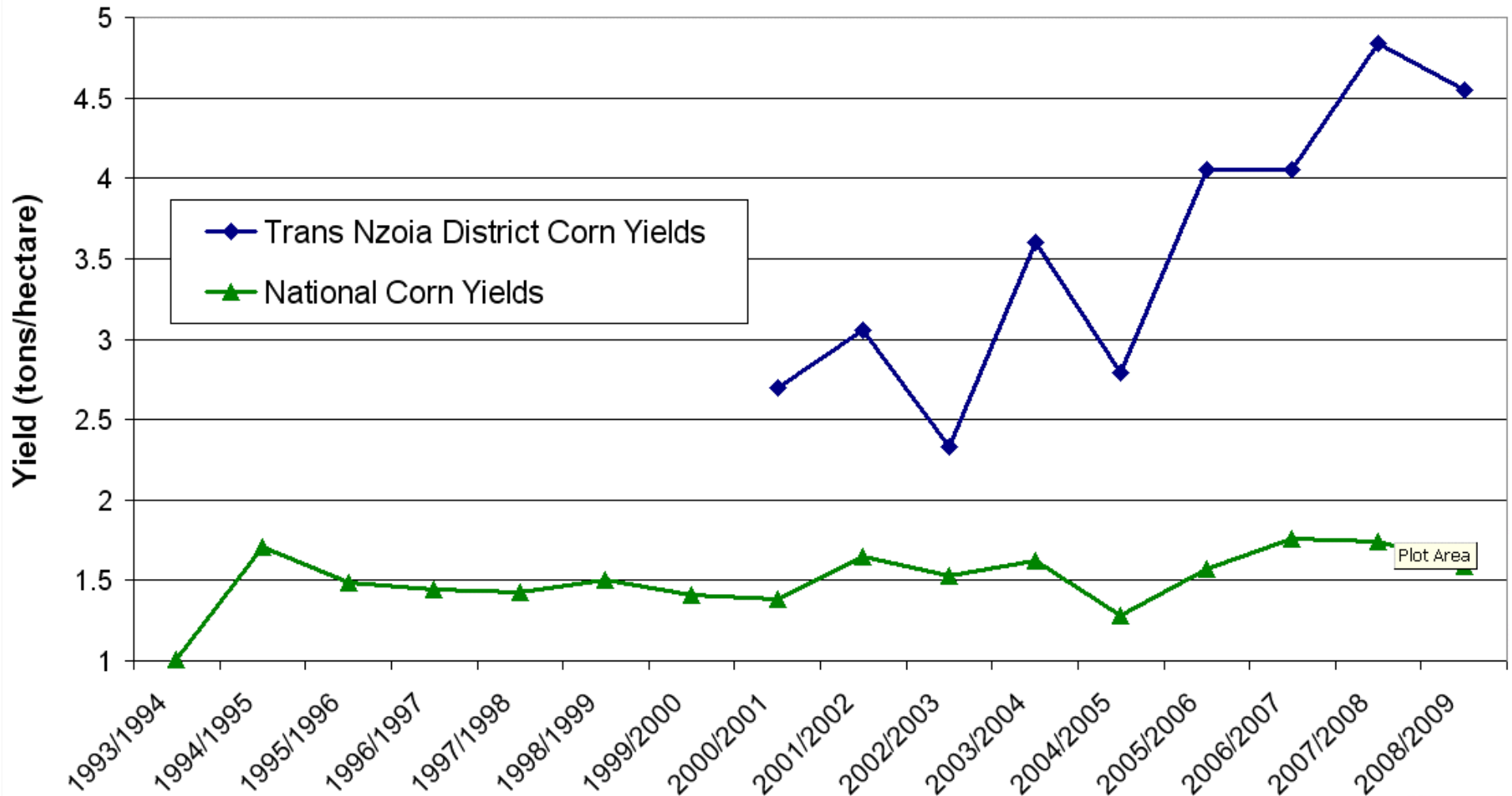


N 00° 44.741' E 034° 46.480' 1619 m 07/02/2008 2:52:57 PM

USDA/FAS/OGA

Trend Yields Improving in Trans Nzoia District

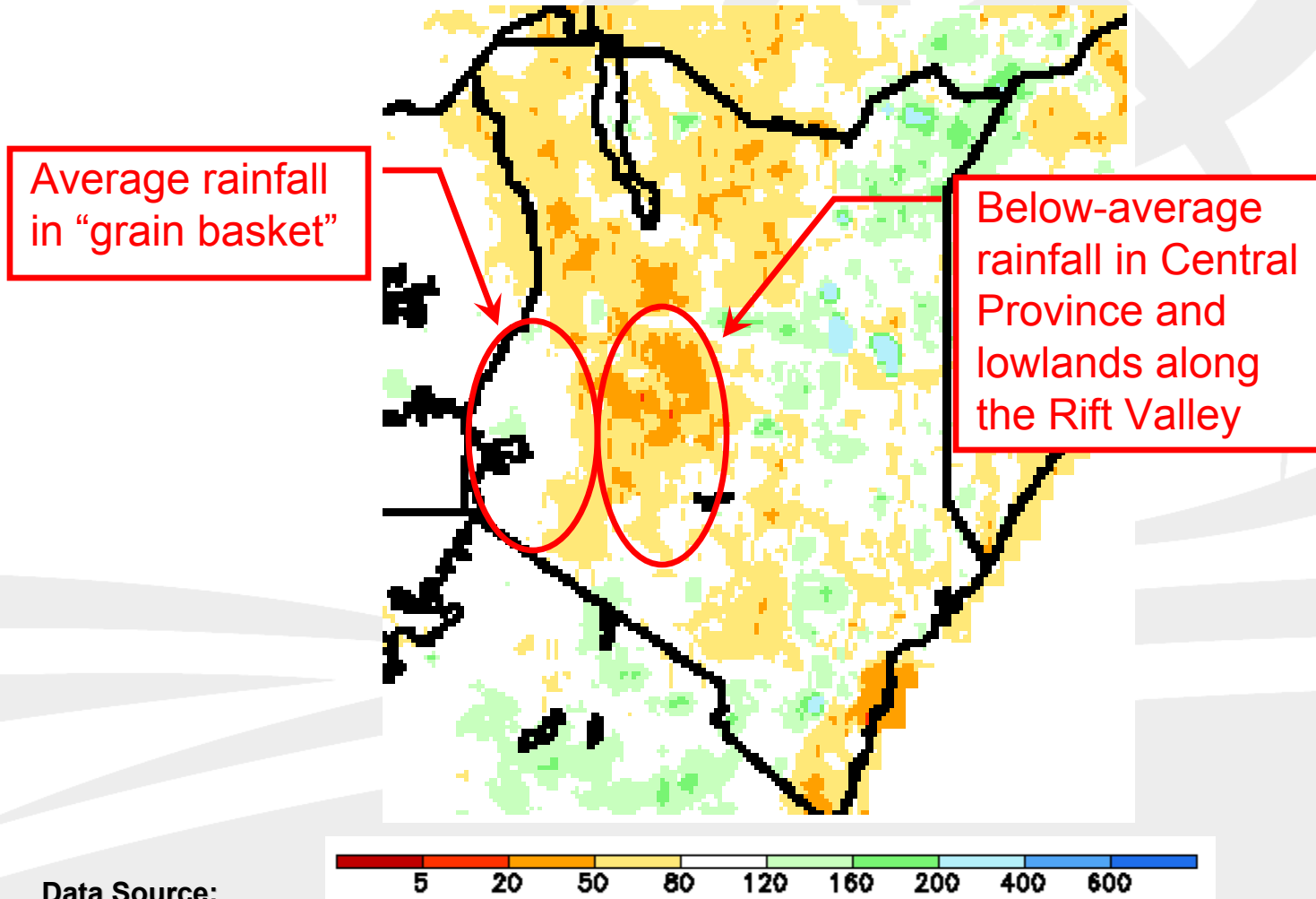
National & Trans Nzoia District Corn Yields



Data Source: National yields from PSD Online and Trans Nzoia District corn yields from the GOK.

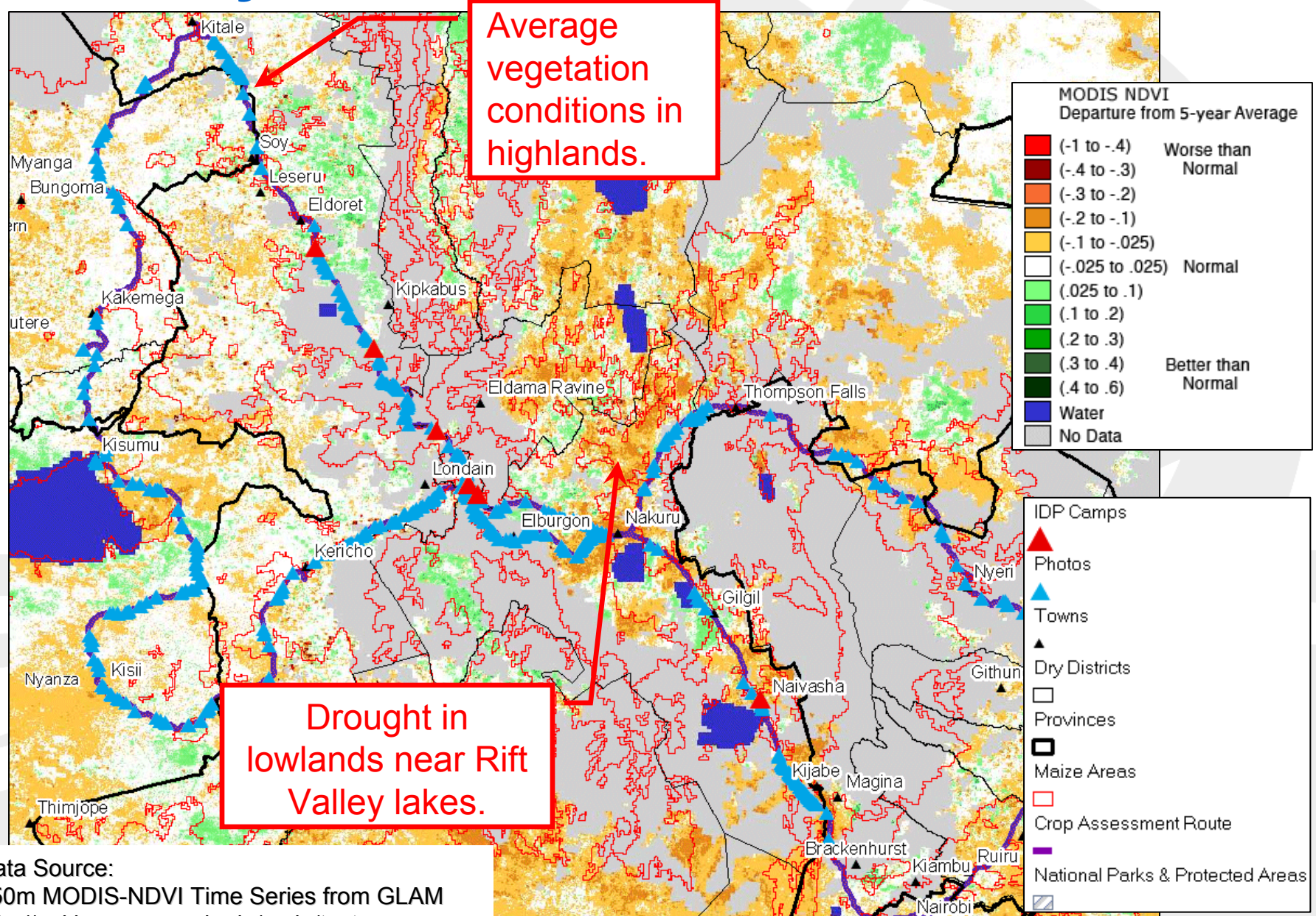
Percent of Normal Seasonal Rainfall (%)

(February 1 – August 24, 2008)



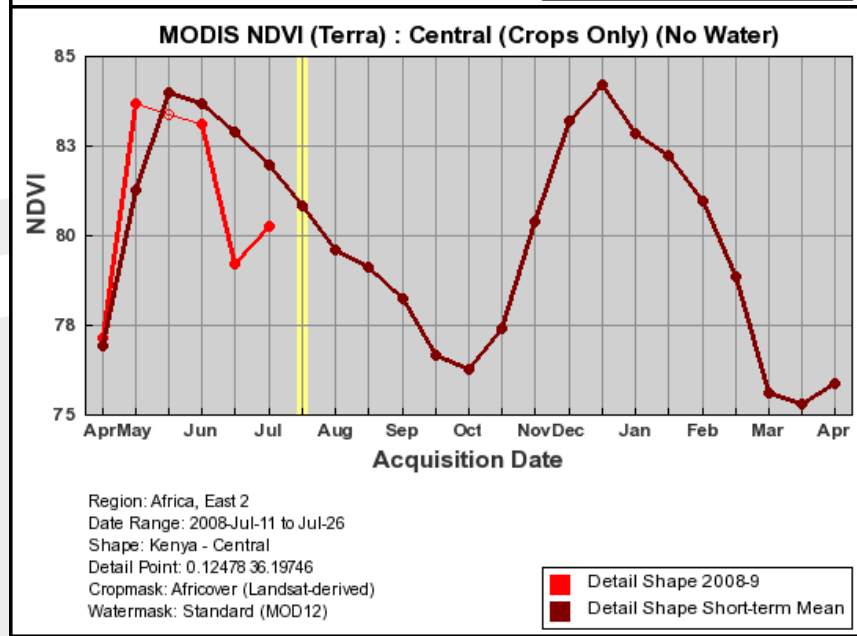
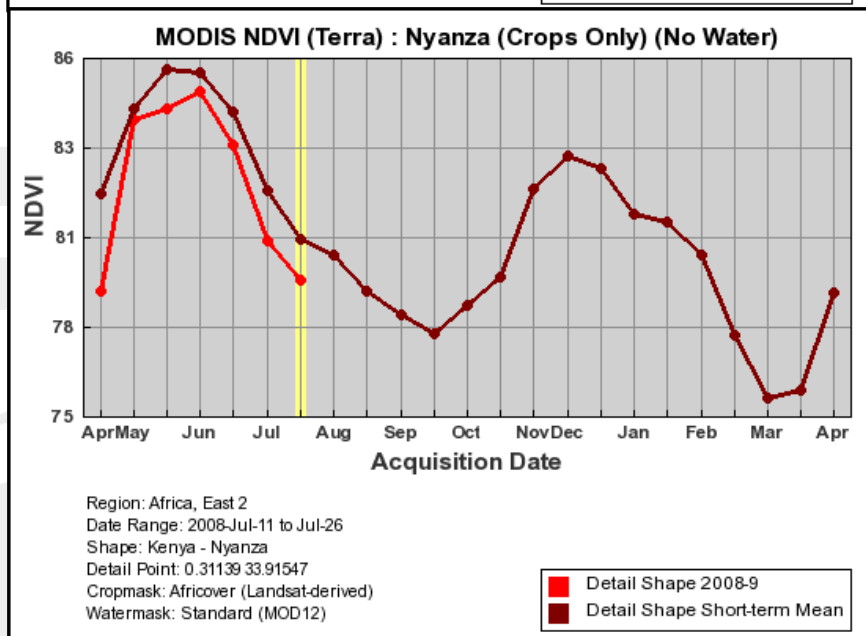
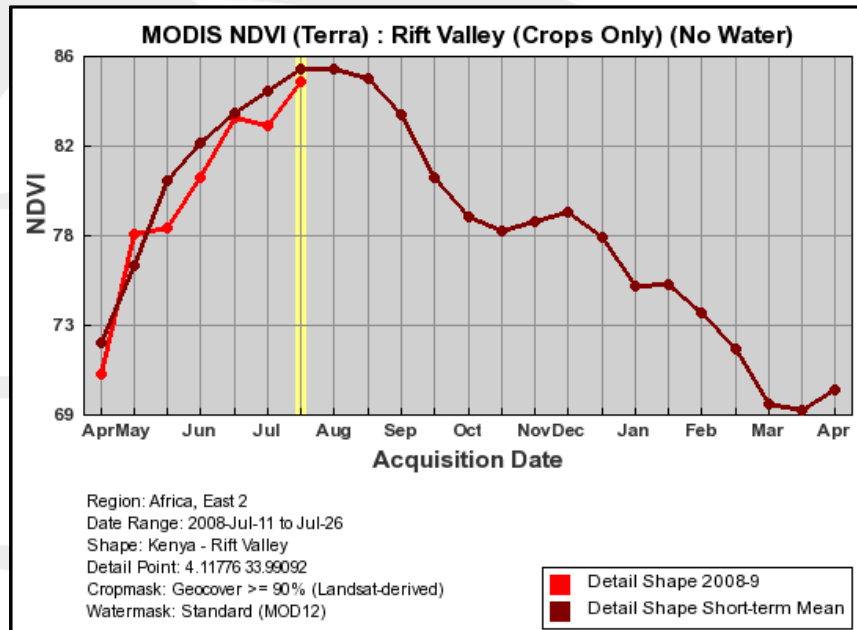
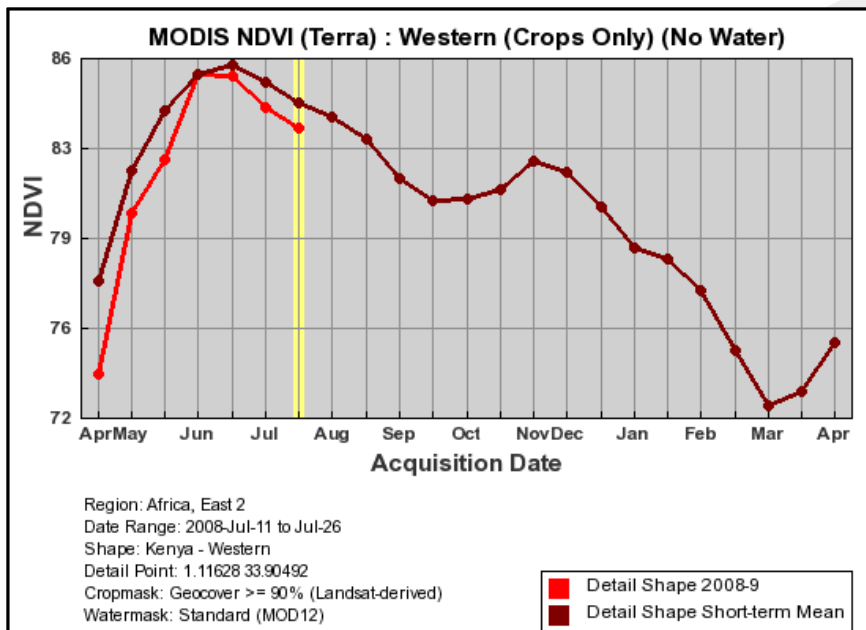
Data Source:
NOAA/CPC RFE Climatology
http://www.cpc.ncep.noaa.gov/products/fews/AFR_CLIM/afr_clim_season.shtml

Rift Valley Province (NDVI-MODIS Anomaly, July 26, 2008)



Data Source:
250m MODIS-NDVI Time Series from GLAM
<http://pekko.geog.umd.edu/usda/test>

NDVI-MODIS Time Series for Western, Rift Valley, Nyanza & Central Provinces

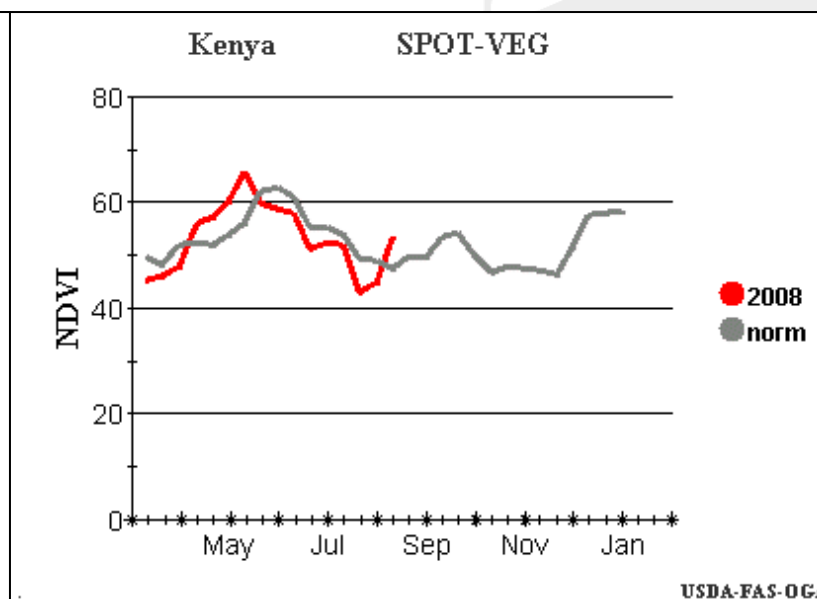
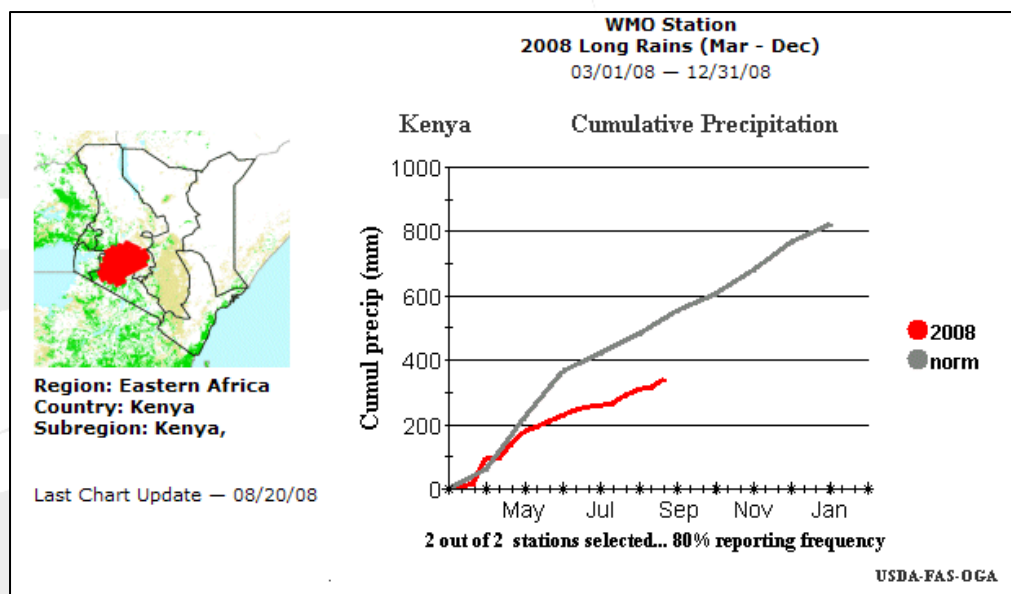
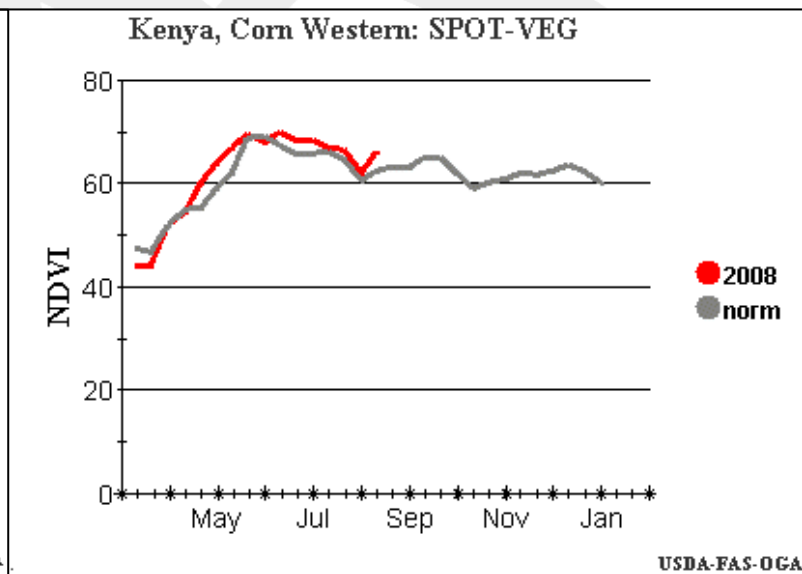
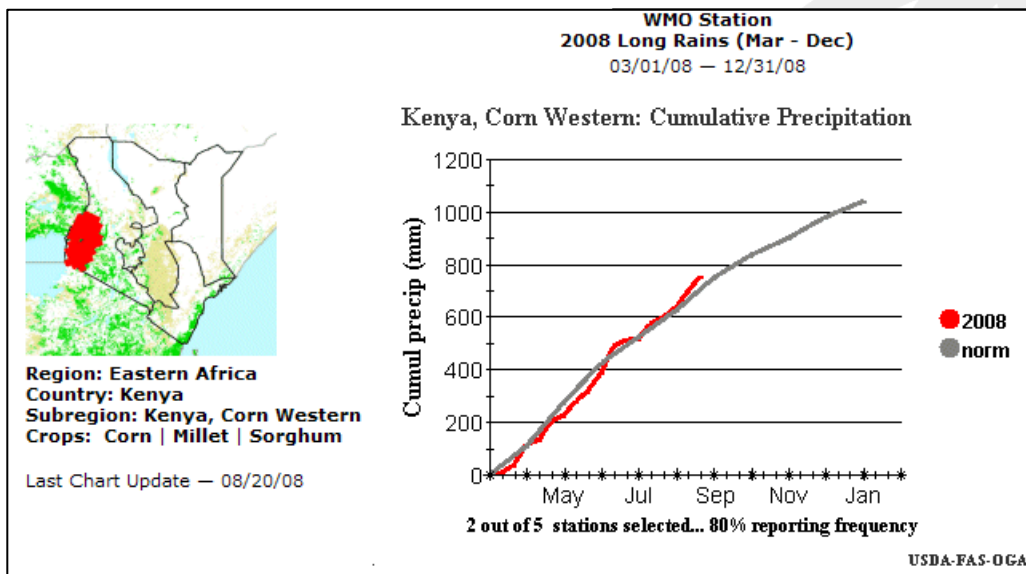


Data Source:
 250-meter MODIS-NDVI Time Series from GLAM
<http://pekko.geog.umd.edu/usda/test>

USDA/FAS/OGA



WMO Rainfall & NDVI/SPOT-VEG Time Series



Data Source:

Crop Explorer

<http://www.pecad.fas.usda.gov/cropexplorer>

USDA/FAS/OGA