

**MINISTRY
OF
AGRICULTURE, MECHANISATION AND IRRIGATION DEVELOPMENT**



ZIMBABWE

**FIRST ROUND
CROP AND LIVESTOCK
ASSESSMENT REPORT**

27 FEBRUARY 2009

Acknowledgements

The following government departments, institutions and international agencies were involved in the First Round Crop and Livestock Assessment –

- Department of Agricultural Technical and Extension Services (AGRITEX)
- Meteorological Services Department
- High Level Resource Mobilisation Committee
- Food and Agriculture Organisation (FAO)
- Famine Early Warning Systems Network (FEWSNET)
- World Food Programme (WFP)
- Zimbabwe National Soya bean Commodity Association (ZNSCA)

Officers from the above stated institutions were involved in planning and coordinating the exercise at national level. At provincial, district and ward levels the national team worked closely with AGRITEX officers who were the major providers of data that formed the basis for this assessment. Without their valuable contribution this assessment would not have been possible.

FAO, FEWSNET and WFP provided financial, technical and logistical support for the exercise. This support facilitated movement of AGRITEX officers for training, data collection, delivery of assessment instruments as well as movement of the national team to and from the provinces.

The Ministry of Agriculture, Mechanisation and Irrigation Development would also like to acknowledge the participation of all the farmers and other key informants interviewed during field visits.

Table of Contents

Executive Summary	1
Objectives of the Assessment	4
Methodology	5
Season Quality	6
Tillage and Agricultural Inputs Situation	7
Crop Situation	10
Maize	10
Sorghum and Millets	13
Other Crops	14
Cotton	14
Tobacco	14
Soyabean	15
Ground nuts	15
Sunflower	15
Sugar beans	16
Minor Crops (Rice, Sweet and Irish potatoes).....	16
Livestock and Grazing Situation	16
Recommendations.....	18
Annex : Cropped Area by Province.....	20

Executive Summary

- Distribution of rainfall was **good throughout the country**. Significant rains were received around mid December for most parts of the country.
- A **dry spell** set in around the end of January through to the time of the verification exercise around the 8th to 15th of February 2009.
- Major crop inputs such as cereal seeds, fertilizers and fuel were in **critical short supply**. The limited quantities available on the open market were priced beyond the reach of many farmers.
- While availability of subsidised fuel was very low this season, the availability of fuel on the open market was generally better than the previous season but the high cost of the fuel was prohibitive for most farmers.
- Large tracts of land were left fallow in the A2 and Large Scale Commercial Farming Areas.
- The total area planted to maize for this 2008/09 season is estimated to be **1 507 698 ha** which is 14% below last season's area which was **1 749 590 ha**. This season **33 % (497 540 ha)** was planted in late November 2008, **49% (738 772 ha)** in the second half of December 2008 and **18% (271 386 ha)** in the middle of January 2009.
- About **12 927 MT (48 % of the seed supplied last year)** maize seed was availed through Government, SADC, NGOs and other input support programmes.
- These programmes contributed **34%** of the area under maize. Consequently, the remaining **66%** of the hectarage was planted using carry over seed, retained, grain from food aid, purchases and seed from other sources.

- Smallholder farming sectors (Communal Areas (CA), Old Resettlement (OR), A1 and Small Scale Commercial Areas (SSCA)) contributed more than **90%** of the area planted to maize with communal sector contributing about **64%**.
- The bulk of the maize crop was in late vegetative to early mature stages. Despite the critical shortages of fertilisers the crop condition was generally fair to good in most parts of the country.

The area planted to other crops is summarised in table below.

Crop	2007/08 (ha)	2008/09 (ha)	Change (%)
Sorghum	277,575	367,220	+32
Finger Millet	96,128	106,141	+10
Pearl Millet	141,970	162,566	+15
Soya bean	61,596	71,574	+16
Tobacco	53,725	46,288	-14
Cotton	465,055	316,656	-32
Groundnuts	358,809	322,796	-10
Sunflower	56,411	72,506	+29
Sugar bean	48,609	43,879	-10

- Livestock was in a **fair to good** body condition across all species. However high incidences of **tick borne diseases** due to erratic dipping.
- Anthrax disease outbreaks were reported in some parts of the country
- Severe depletion of livestock was reported in most parts of the country as households disposed livestock for grain due to food insecurity.
- In most areas animal draft power accounts for between **70% to 90%** of the planted area, tractor power accounts for between **2% to 15%**, and hand tillage ranges from **5% to 15%**. Conservation Farming (minimum tillage) was being practised in some areas visited, the data collected on

Objectives of the Assessment

The overall purpose of the First Round Crop and Livestock Assessment carried out during the period **28th of January to 15th of February 2009** was to provide early warning information on the progress of the cropping season in relation to national agricultural and food security targets. The specific objectives of the assessment were:

- To assess and verify areas planted to different crops in the 2008/09 agricultural season at national and sub-national levels¹.
- To assess growth stages and condition, and establish preliminary implications of these on production of major crops at national and sub-national levels.
- To assess and verify availability of major cropping inputs to farmers in the country and the implications of the same on cropped areas and crop condition.
- To assess the situation of livestock as it relates to feed availability, water supply, disease prevalence and animal condition.
- To establish the level of promotion and uptake of Conservation Agriculture in Zimbabwe.
- To establish the coverage and state of the rain gauge network in the country.
- To make recommendations based on the findings of the assessment.

¹ Ward, district and provincial levels

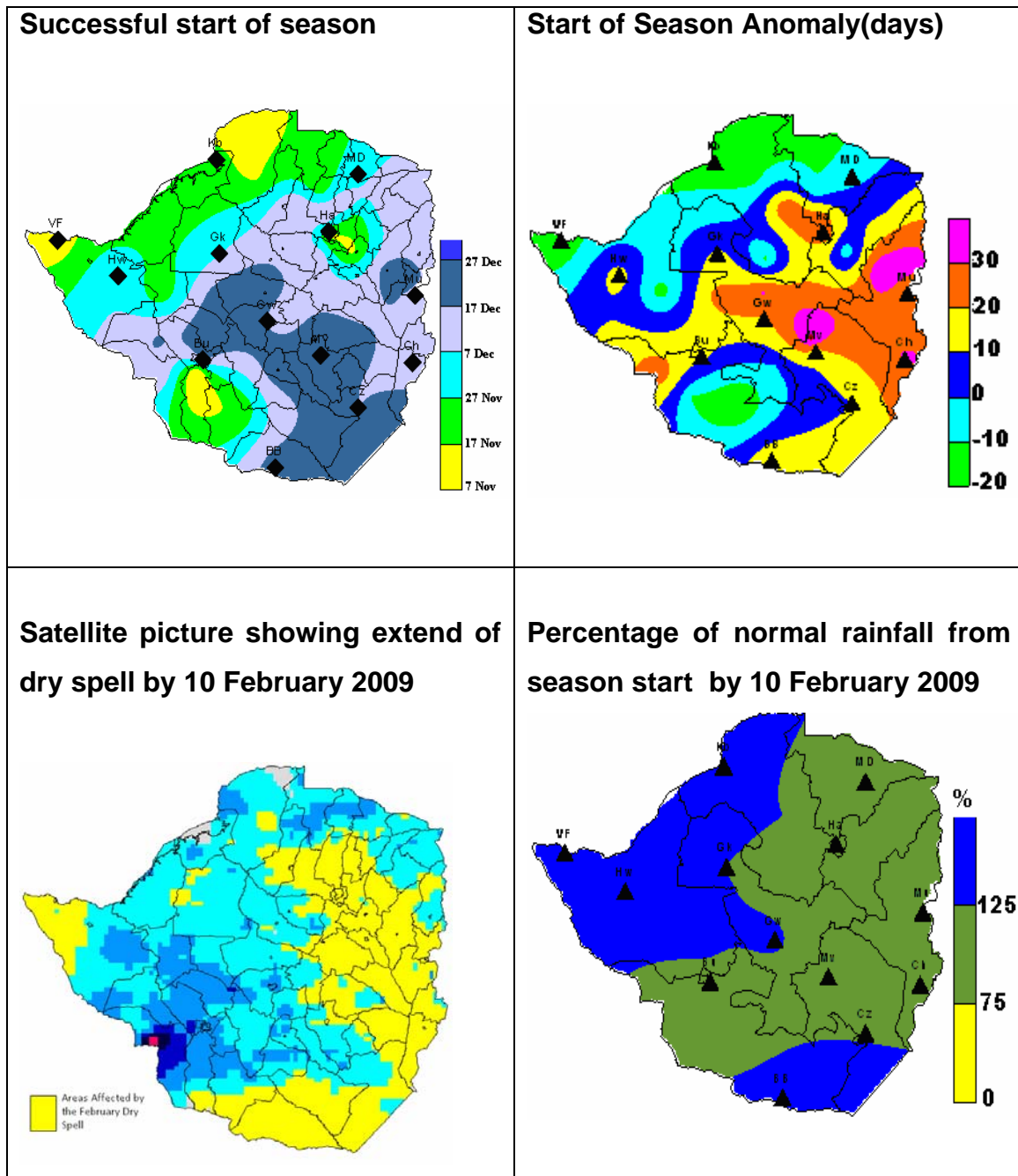
Methodology

- Primary data collection was undertaken in all the rural wards by ward based Agritex Officers. Refresher training on area measurement techniques, assessing crop conditions and stages was conducted for Agritex Supervisors and Extension Officers prior to the data collection.
- The primary data was verified by a national team comprising of officers from the Ministry of Agriculture, Mechanisation and Irrigation Development, AGRITEX, High Level Resource Mobilisation Committee, Meteorological Services Department, FEWSNET, Food and Agriculture Organization (FAO) and the World Food Programme.
- The verification by the national crop and livestock assessment team involved visiting all rural districts, farming sectors in the country to observe field crops and hold discussions with farmers and field extension officers on crop and livestock performance.
- After the verification, the national team then collated all the verified crop data to produce district, provincial and national level profiles.

Season Quality

- There was evidence of a false start to the season along and south of the main watershed around mid November.

Figure 1: Season Quality Analysis for 2008/09 Summer Cropping Season



- The season started late (2nd Dekad) of December for most parts of the country. Most areas had received normal to above normal rainfall by the time of the assessment. Rainfall was well distributed until the onset of a dry spell towards the end of January 2009.
- The dry spell had started to adversely affect crops during the time of this assessment.

Tillage and Agricultural Inputs Situation

- In most areas animal draft power accounts for between **70%** to **90%** of the cropped area, tractor power accounts for between **2%** to **15%**, and hand tillage (chibhakera) ranges from **5%** to **15%**. Conservation Farming was being practised in some areas visited, the data collected on tillage methods is being processed and a separate report will be produced.
- Major crop inputs such as cereal seeds, fertilizers and fuel were generally in critical short supply and direct purchases were very limited as there were inadequate stocks on the open market, which were sold in foreign currency at exorbitant prices for most farmers.
- A number of agricultural input support programmes were in place to assist farmers in different sectors. These include:
 - Presidential Programme
 - Targeted Farmers Programme (Champion Farmer)
 - Reserve Bank of Zimbabwe Programme
 - Social Welfare programme for vulnerable households
 - SADC Agricultural Assistance Programme supporting Communal, Old Resettlement and Small Scale Commercial Farming
 - Contract schemes for tobacco and cotton.
 - NGO Programs supporting mainly vulnerable groups

Maize Seed

- About **12 927 tonnes** was available for the 2008/09 season as compared to the ideal situation of **38 000 tonnes** was availed through Government, SADC, NGOs and other input support programmes.
- The **12 927 tonnes** were planted on **34%** of the area cropped to maize.
- **66%** of the hectarage under maize was planted using **carry over seed, retained grain, grain from food aid, purchases and seed from other sources.**

Fertilisers

- About **19 147 tonnes** of basal fertiliser against an ideal situation of **315 000 tonnes** and **12 561 tonnes** of top dressing fertiliser against an ideal situation of **260 000 tonnes** was available through support programmes.
- Manicaland and Mashonaland East Provinces received more basal fertiliser in 2008/09 than in 2007/08 season.
- Mashonaland East received more top dressing fertiliser in 2008/09 than 2007/08. All other provinces received considerably less fertiliser this year than last year.

Table 1: Contribution of Inputs Support Programmes to Fertiliser Availability

Province	Basal (Tonnes) - 07/08	Basal (Tonnes) - 08/09	% of 2007/08	Top Dressing (Tonnes) - 07/08	Top Dressing (Tonnes) - 08/09	% of 2007/08
Manicaland	1,272	1,888	148	1,685	1,229	73
Mash East	2,715	4,631	171	2,550	3,014	118
Mash West	15,997	3,948	25	7,586	2,868	38
Mash Central	9,843	4,967	50	11,214	2,486	22
Masvingo	2,318	1,120	48	4,108	713	17
Mat North	1,146	600	52	763	421	55
Mat South	1,090	421	39	8,522	409	5
Midlands	4,989	1,573	32	3,138	1,421	45
Total	39,370	19,148	49	39,566	12,561	32

- Inputs for cotton were mainly supplied by contractors, though in most instances the **cotton input packages were incomplete with most contractors providing seed only.**
- In most areas animal draft power accounted for between **70 to 90%** of the cropped area, tractor power accounted for between **2% to 15%**, and hand tillage accounted for **5% to 15%**.
- In areas where the rains started late, the urgency by most farmers to plant with the first rains resulted in more farmers practicing minimum tillage as draft power was in short supply.
- While availability of subsidised fuel was very low this season, the availability of fuel on the open market was generally better than the previous season but the high cost of the fuel was prohibitive for most farmers. Consequently, large tracts of land were left fallow in the A2 and Large Scale Commercial Farming areas.
- The quantities of inputs provided through the support programmes were inadequate to meet the requirements, some programmes did not offer complete input packages and inputs were provided late.
- SADC Agricultural Assistance Programme provided substantial amounts of inputs but these came late into the season.

Crop Situation

Maize

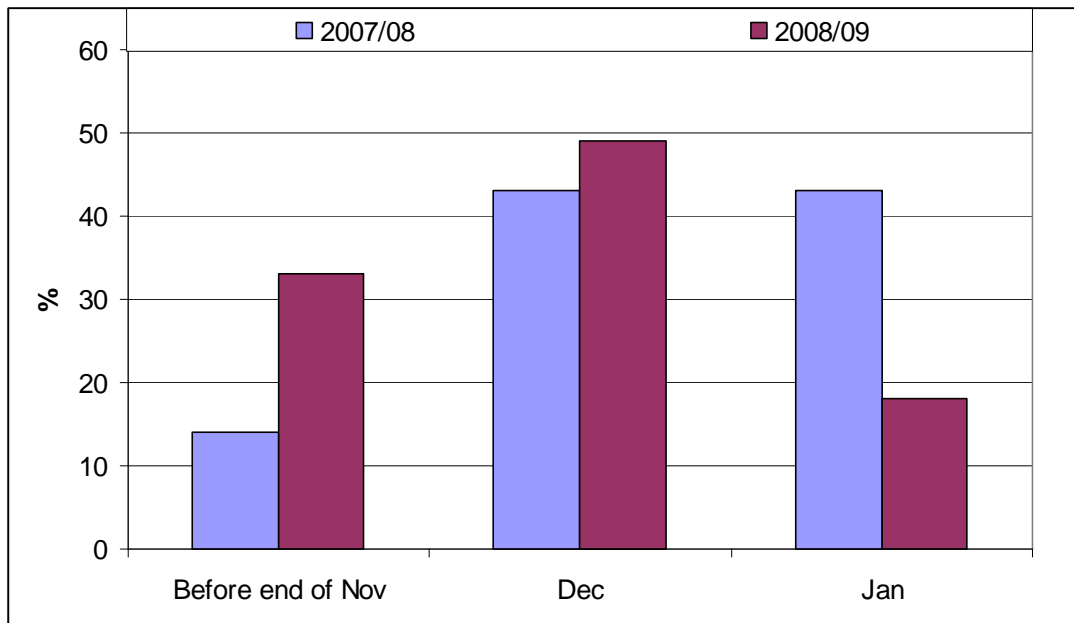
- The total area planted to maize for this 2008/09 season is estimated to be **1 507 698 ha** which is 14% below last season's area which was **1 749 590 ha**. This season **33 % (497 540 ha)** was planted in late November 2008, **49% (738 772 ha)** in the second half of December 2008 and **18% (271 386 ha)** in the middle of January 2009
- This was a major shift from the pattern realised last season when **14%** of the maize area was planted before end of November, **43 %** in December and **43%** in January .

Table 2: Areas Planted to Maize in 2008/09 By Time of Planting

Province	Area planted (ha)		Area Planted In		
			Before end of Nov'08	Dec'08	Jan'09
	2007/08	2008/09	%	%	%
Manicaland	315,063	219,453	20	60	20
Mash Central	226,106	173,123	26	58	15
Mash East	322,341	241,202	32	53	15
Mash West	190,594	194,910	47	43	10
Mat North	76,206	75,168	32	46	22
Mat South	95,266	95,919	36	36	28
Midlands	294,297	300,464	43	43	14
Masvingo	229,717	207,458	26	47	27
Grand Total	1,749,590	1,507,698	33	49	18

- The bulk of the maize crop was in late vegetative to early reproductive stages. Despite the critical shortages of fertilisers the crop condition was generally fair to good in most parts of the country

Figure 2: Percentage Areas Planted to Maize by Time of Planting



- Smallholder farming sectors (CA, OR, A1 and SSCA) contributed more than **90%** of the area planted to maize with communal sector contributing about **64%**.

Figure 3a: Areas Under Maize in 2007/08 by Sector²

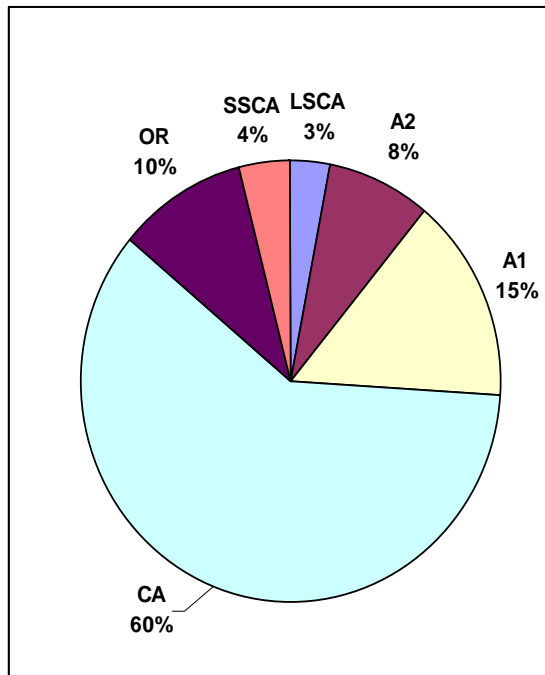
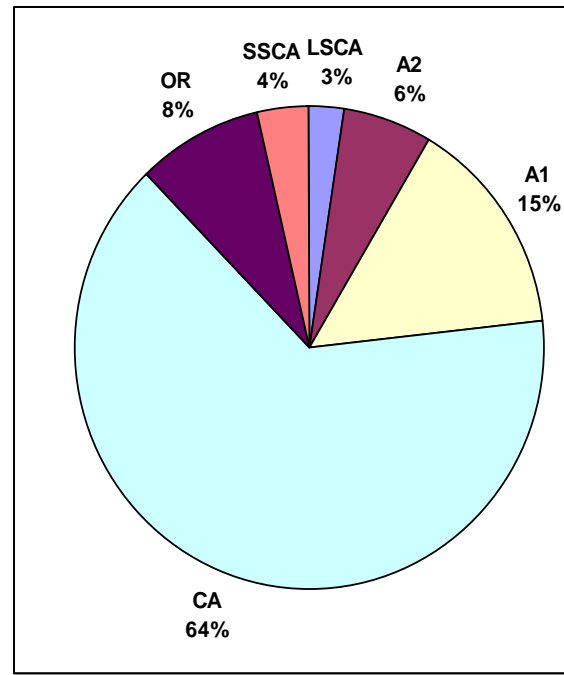


Figure 3b: Areas Under Maize in 2008/09 by Sector



There was a slight shift in the area under maize by sector

- Decreased from **8%** in 2007/08 to **6%** 2008/09 in A2 sector
- Decreased from **10% to 8%** in the Old Resettlement Sector
- In the communal sector the area under maize increase from **60% to 64%**

² CA stands for communal areas, OR for Old resettlement, SSCA for small scale commercial areas, A1 for A1 new resettlement model, A2 for A2 new resettlement model and LSCA for large scale commercial areas.

Sorghum and Millets

Table 3: Area Planted to Sorghum and Millets

PROVINCE	SORGHUM		FINGER MILLET		PEARL MILLET	
	2007/08	2008/09	2007/08	2008/09	2007/08	2008/09
Manicaland	51,911	61,822	22,300	19,012	27,696	31,614
Mash Central	12,898	30,184	644	1,180	3,163	4,067
Mash East	20,135	24,639	12,392	13,671	10,991	6,311
Mash West	5,908	15,512	811	1,252	145	1,755
Mat North	42,729	45,992	32	864	29,812	34,232
Mat South	40,307	49,472	6,050	8,347	31,032	35,410
Midlands	52,603	64,499	15,371	15,309	15,974	17,013
Masvingo	51,084	75,100	38,528	46,505	23,158	32,164
Grand Total	277,575	367,220	96,128	106,141	141,970	162,566

- Area planted to finger and pearl millets increased from **238 099 ha** to **268 707 ha** a 13% increase.
- The area planted to sorghum (**367 220 ha**) increased by **32%** this season from **277 575 ha** last season.
- As expected, about **86%** of the total area under sorghum was contributed by the communal sector.

Other Crops

Table 4: Area Planted to Other Crops

Crop	2007/08 (ha)	2008/09 (ha)	Change (%)
Soya bean	61,596	71,574	+16
Tobacco	53,725	46,288	-14
Cotton	465,055	316,656	-32
Groundnuts	358,809	322,796	-10
Sunflower	56,411	72,506	+29
Sugar bean	48,609	43,879	-10

Cotton

- Total area planted to cotton was **316 656 ha** which is a **32%** decrease from **465 055 ha** planted last year.
- The discernible decrease in cotton area planted was due to
 - Lack of input support as many Cotton companies scaled down input support programmes
 - Poor producer prices paid last season and the cheque payment method which resulted in farmers losing the value of their crop in a hyperinflationary environment.
- The crop condition ranges from fair to good mainly due to good rainfall distribution pattern.

Tobacco

- A total of **46 288 ha** flue cured tobacco was planted as compared to **53 725 ha** planted last year, a **14%** decline.
- The decrease was due to.
 - lack of input support as many contractors scaled down input support programmes

- Non payment of the promised foreign currency component, the poor exchange rate applied to tobacco earnings and the cash withdrawal limits.
- Reaping and curing of the irrigated and early dry land crop is in progress, notwithstanding challenges emanating from shortages of coal, fuel, firewood and power outages.
- Most of the dry land crop is at de-suckering stage.

Soyabean

- Area under Soyabean was **71 574 ha** an increase of **16%** from **61 596 ha** planted last season.
- Bulk of the Soyabean crop was planted in the A2 sector (**32%**)

Ground nuts

- A total of **322 796 ha** was planted as compared to **358 809 ha** last year representing a **10%** decline in area planted. The major source of groundnuts seed was retentions.
- The crop condition is generally fair to good in most provinces and the early planted crop was at pod formation.

Sunflower

- A total of **72 506 ha** was planted as compared to **56 411 ha** last year (**29%** increase). The bulk of the crop was planted in the Communal Areas (**73 %**).
- Significant increase to area planted to sunflower is partly due to oil pressing requirements.
- The crop condition was generally fair to good in most provinces.

Sugar beans

- **43 879 ha** was planted compared to **48 609** last year, a drop of **10 %**. During the time of the assessment farmers were still planting Sugar beans mainly from the SADC input programme. Therefore the area under this crop will be revised during the second round crop assessment.
- Communal Areas constitute the bulk of the area where sugar beans was planted (**43 %**).

Minor Crops (Rice, Sweet and Irish potatoes).

- There was an increase in the area planted to minor crops compared to last year except for Irish potatoes which decreased marginally by **3%**. As usual Manicaland had the biggest share of area under Irish Potatoes (**46%**).
- Area under sweet potatoes increased by **11%** from **61 311 ha** to **69 344 ha**.
- The area under rice increased by **30%** from **3 891 ha** to **5 077 ha**.
- Incidences of army worm outbreaks were reported in Mashonaland East and Manicaland, the outbreaks were contained.

Livestock and Grazing Situation

- Livestock were in a fair to good body condition across all species in communal areas while those in resettlement and commercial farming areas are in very good condition.
- Communal areas which are in predominantly marginal areas have fair to good grazing while there is plenty of herbage in commercial and resettlement areas.

- Water was available at the moment but more rains are needed in order to boost reserves for the dry period.

Animal Diseases

- Newcastle disease was reported in parts of Midlands, Mash Central and Masvingo provinces.
- Anthrax reported in parts of Mash East, Mat North, Mash West, Mash Central, Midlands and Manicaland Provinces.
- Tick-borne diseases reported in all provinces

Animal Diseases Control

- Dipping has been irregular in all districts , farmers doing their own spraying to control ticks were resources are available
- Anthrax and Newcastle vaccinations have been carried out in most parts of the country.
- Poor control of internal parasites in all provinces.

Other Livestock Issues

- Severe depletion of livestock numbers was reported in most districts in the Midlands, Mashonaland Central, Manicaland, and the Matabeleland provinces. Livestock was traded for grain by the desperate owners under very unfair trading terms which were dictated by the grain sellers mainly from urban areas. For example, a beast was traded for anything between two and four 50kg bags of maize grain compared to around one tonne per beast during normal trading.
- Poultry and piggery projects on the decline due to shortages of stock feeds
- Widespread stock thefts were reported, this could frustrate the national effort to boost the national herd.

Recommendations

Short - Medium Term

- Recognizing that about **18 %** of maize crop was at vegetative stage by mid February 2009 and showing signs of nitrogen deficiency, it is recommended that top dressing fertilizers should be made available particularly in Manicaland and Mashonaland Central provinces where the young crop was most dominant.
- Inputs should be available on the market in sufficient quantities on time and at affordable prices to the farmers.
- Rainfall data is an important input into developing appropriate extension messages and yet rain gauge density is very low throughout the country. There is an urgent need to improve the rain gauge network.
- The assessment found out that dipping continues to be erratic and inadequate throughout the whole country. It is therefore recommended that measures to restore proper and adequate dipping be put in place urgently.

Long Term

- Reduced viability of tobacco and cotton production due to inefficient payment systems / mechanisms resulted in significant drop in areas planted to these crops. It is therefore recommended that the crop payment systems be revamped to restore viability of these enterprises.
- Whenever input support programmes are to be implemented they should be on time, provide a complete package and should be coordinated well to ensure synergy.

- Conditions that promote sufficient quantities of seeds, fertilizers and fuel to be placed on the market in a manner that adequately rewards the inputs suppliers should be put in place.
- Measures should be put in place to promote restocking in smallholder farming areas and development of the commercial cattle herd in the A2 and large scale commercial sectors through;
 - Livestock credit schemes
 - Improved livestock husbandry (management)
 - Promoting marketing arrangements
- To encourage household level food security, input support programmes should prioritize smallholder farmers who depend mostly on own production for their subsistence.
- There is need to enhance the capacity of agricultural extension personnel through addressing the following areas:
 - Mobility
 - Communication
 - Training
 - Incentives
 - Operational resources
- Producer and market prices influence to a certain extent the area planted for most commercial crops. It is therefore recommended that pre-planting pricing policy on commercial crops should be pursued.
- Contract schemes under cotton and tobacco were providing incomplete input packages to farmers resulting in reduced areas planted to these crops. Contract farming should therefore be regulated, effectively monitored and ensure mutually beneficial relationship between the farmers and contractors.

Annex: Cropped Area by Province

Manicaland											
Maize											
District	Area planted by season (ha)		Area planted before 30/11/08	Area planted in Dec 2008	Area planted in Jan 2009	Area planted by sector (ha)					
	2007/08	2008/09	area	area	area	LSCF	A2	A1	communal	OR	SSCA
Buhera	23427	23052.90	5067.6	11594.5	6390.8	0	0	0	22791.7	261.2	0
Chipinge	45076	48163.00	5159	25684	17320	420	1926	8115	35012	280	2410
Chimanimani	57300	15420.00	4499	9316	1605	200	183	4148	10356	470	63
Mutare	33614	25139.00	7272	12793	5074	810	700	2006	14689	4610	2324
Mutasa	38411	24022.40	4977.9	16048.6	2995.9	1693	155.4	629	20787.2	257.8	500
Makoni	90345	62084.00	13170	41492	7422	2211	3993	4972	30588	18300	2020
Nyanga	26890	21572.00	3715	15279	2578	0	7	551	16786	4112	116
Total	315063	219453.3	43860.5	132207.1	43385.7	5334	6964.4	20421	151009.9	28291	7433
Sorghum											
Buhera	8806	14646.30	5888.6	6129	2628.7	0	0	0	14646.3	0	0
Chipinge	9125	17415.00	3961	11498	1956	0	10	38	17345	8	14
Chimanimani	3485	6141.80	3205.4	2342.9	593.5	0	0	17.5	6108.3	16	0
Mutare	18000	15334.00	4125	9681	1528	8	0	80	14594	90	562
Mutasa	294	58.87	50	8.87	0	0	0	0	58.87	0	0
Makoni	1951	4171.00	1424	2420	327	0	0	82	2853.6	1225.4	10
Nyanga	10250	4055.31	415.2	3033.51	606.6	0	0	0	4023.21	32.1	0
Total	51911	61822.28	19069.2	35113.28	7639.8	8	10	217.5	59629.28	1371.5	586
Finger Millet											
Buhera	2879	7093.20	4727.9	1761.5	603.8	0	0	0	7093.2	0	0
Chipinge	480	426.00	234	119	73	0	3	90	298	1	34
Chimanimani	500	1153.50	516.4	542.1	95	0	0	21.9	1130.1	1.5	0
Mutare	15000	1566.00	831	595	140	0	0	40	1364	70	92
Mutasa	1570	3484.02	1046.02	2438	0	0	0	0	3434.02	0	50
Makoni	1616	4889.00	2666.4	1830.1	392.5	0	56	249	3900	661	23
Nyanga	255	400.22	288.82	99.4	12	0	0	16.9	348.14	35.18	0
Total	22300	19011.94	10310.54	7385.1	1316.3	0	59	417.8	17567.46	768.68	199
Pearl Millet											
Buhera	7933	14159.30	8751	4046.1	1362.2	0	0	0	14159.3	0	0
Chipinge	645	278.00	60	141	77	0	0	0	278	0	0
Chimanimani	356	118.00	58.6	46.4	13	0	0	3	111	4	0
Mutare	16000	12913.00	5613	5870	1430	0	0	0	12114	50	749
Mutasa	0	0.00	0	0	0	0	0	0	0	0	0
Makoni	239	497.00	310	166	21	0	0	0	312	185	0
Nyanga	2523	3648.82	1100.7	2169.32	378.8	0	0	0	3473.52	175	0
Total	27696	31614.12	15893.3	12438.82	3282	0	0	3	30447.82	414	749
Grand total	416970	331901.64	89133.54	187144.3	55623.8	5342	7033.4	21059.3	258654.46	30845.18	8967

Mash Central												
Maize												
District	Area planted by season (ha)		Area planted before 30/11/08	Arer planted in Dec 2008	Area planted in Jan 2009	Area planted by sector (ha)						
	2007/08	2008/09	area	area	area	LSCF	A2	A1	communal	OR	SSCA	
Bindura	20687	24422	5814	13698	4910	2552	3510	6699	11229	433		
Centenary	19116	19454	8630	7572	3252	528	1009	2034	13462	806	1615	
Guruve	27206	28881	12992	13076	2813	185	780	2422	22369	1645	1480	
Mazowe	34896	35986	14462	18461	3063	4976	9466	6674	14870	0	0	
Shamva	16420	15565	1003	12502	2060	840	706	2592	10325	1068	34	
Rushinga	25980	24124	817	18201	5106				24124			
Mt Darwin	34860	24691	1709	17365	5617	70	620	3830	15371	2680	2120	
Total	179165	173123	45427	100874	26821	9152	16091	24250	111751	6632	5249	
Sorghum												
Bindura	237	258	59	61	138	23	30	30	170	6	0	
Centenary	3757	12693	6646	4189	1858	0	48	0	12640	6	0	
Guruve	770	911	194	579	138	0	1	619	234	9	49	
Mazowe	202	161	22	127	12	100	4	16	41	0	0	
Shamva	169	371	1	47	323	36	80	50	74	131	0	
Rushinga	4550	7387	592	5403	1391				7387			
Mt Darwin	3214	8403	50	3933	4420	0	58	102	7860	220	163	
Total	12898	30184	7565	14339	8280	159	220	816	28405	372	212	
Finger Millet												
Bindura	51	174	62	92	20	0	10	32	129	3		
Centenary	95	431	141	252	39	0	4	427	0	0	0	
Guruve	330	218	174	41	2	0	0	46	162	7	2	
Mazowe	22	11	9	0	2	0	0	4	7	0	0	
Shamva	31	39	0	39	0	0	0	2	3	34		
Rushinga	30	147	1	119	27				147			
Mt Darwin	86	161	18	121	22	0	0	5	153	1	2	
Total	644	1180	405	664	112	0	14	517	601	45	4	
Pearl Millet												
Bindura	27	101	2	48	51	0	5	15	81	0		
Centenary	66	153	153	0	0	0	0	0	153	0	0	
Guruve		0	0	0	0	0	0	0	0	0	0	
Mazowe		0	0	0	0	0	0	0	0	0	0	
Shamva	0	0	0	0	0	0	0	0	0	0	0	
Rushinga	2950	2968	252	1645	1071				2968			
Mt Darwin	120	846	3	391	453	0	0	78	726	13	29	
Total	3163	4067	409	2083	1575	0	5	93	3927	13	29	
Grand total	195869	208554	53806	117960	36787	9311	16330	25676	144683	7061	5494	

Mash East												
Maize												
District	Area planted by season (ha)		Area planted before 30/11/08	Area planted in Dec 2008	Area planted in Jan 2009	Area planted by sector (ha)						
	2007/08	2008/09	area	area	area	LSCF	A2	A1	communal	OR	SSCA	
Chikomba	59746	45311.00	18500	21500	5311	850	690	9800	23316	3600	7055	
Mudzi	27002	15897.00	1052	10758	4087	0	0	0	15897	0	0	
Murewa	35550	39190.00	14780	17679	6731	433	1606	7812	27491	248	1600	
Goromonzi	26498	23033.00	9656	11454	1923	548	7475	4792	10106	0	112	
Hwedza	44050	33902.00	6349	20670	6883	50	4027	6242	21276	1022	1285	
Mutoko	24775	23813.72	1895	18429	3489.72	80	0	0	8052.72	13191	2490	
UMP	33851	22087.00	6950	10932	4205	0	0	0	22087	0	0	
Marondera	35200	22400.00	11130	9167	2103	1384	4383	8284	6355	1274	720	
Seke	35669	15567.90	6287	7474.4	1806.5	1582	2160	2398.9	6659	1527	1241	
Total	322341	241201.62	76599	128063.4	36539.22	4927	20341	39328.9	141239.72	20862	14503	
Sorghum												
Chikomba	461	432.00	59	143	230			9	57	246	35	85
Mudzi	8526	12988.00	471	8586	3931	0	0	0	12988	0	0	
Murewa	258	1232.50	539	513.5	180	0	28	117	1068.5	1	18	
Goromonzi	75	194.00	57	130	7	3	55	50	86			
Hwedza	413	1290.20	107.7	718.2	464.3			194	340.2	556	16	184
Mutoko	3883	1947.00	169	1097	681				1833	24	90	
UMP	6132	6264.00	736	3298	2230	0	0	6264	0	0	0	
Marondera	175	116.00	41	64	11	20	5	12	38	41	0	
Seke	212	175.00	65	81.9	28.1	31	6	17.8	85	34.8	0.4	
Total	20135	24638.7	2244.7	14631.6	7762.4	54	297	6858	16900.5	151.8	377.4	
Finger Millet												
Chikomba	6441	5758.00	5700	58	0	3	116	508	4856	65	210	
Mudzi	581	1324.00	66	1157	101	0	0	0	1324	0	0	
Murewa	1027	2462.00	1499	765	198	0	17	206	2197	3	39	
Goromonzi	224	285.00	152	112	21		16	33	232	4		
Hwedza	820	914.00	480.2	354.5	79.3	0	16	78	607	19	194	
Mutoko	375	932.00	167.5	551	213.5	0	0	0	743	57	132	
UMP	1874	1227.00	412	580	235	0	0	0	1227	0	0	
Marondera	174	272.00	191	80.3	0.7	0	2	60	179	16	15	
Seke	876	496.90	360.9	102	34	2	42	120	268.4	55.1	9.4	
Total	12392	13670.9	9028.6	3759.8	882.5	5	209	1005	11633.4	219.1	599.4	
Pearl Millet												
Chikomba	0	7.00	7	0	0	0	0	0	2	0	5	
Mudzi	2533	2395.00	159	1782	454	0	0	0	2395	0	0	
Murewa	0	51.50	33.9	14.2	3.4	0	0	6	45.5	0	0	
Goromonzi	0	38.00	18	18	2			2	36			
Hwedza	256	121.00	36.8	73.2	11		1	12	36.5	0.5	71	
Mutoko	4732	538.00	55	337	146	0	0	0	520	3	15	
UMP	3456	3143.00	257	2015	871	0	0	0	3143	0	0	
Marondera	4	7.70	7.7	0	0				7.5	0.2		
Seke	10	10.00	10					6	2	2		
Total	10991	6311.2	584.4	4239.4	1487.4	0	7	22	6187.5	3.7	91	
Grand total	365859	285822	88457	150694	46672	4986	20854	47214	175961	21237	15571	

Mashonaland West											
Maize											
District	Area planted by season (ha)		Area planted before 30/11/08	Area planted in Dec 2008	Area planted in Jan 2009	Area planted by sector (ha)					
	2007/08	2008/09	area	area	area	LSCF	A2	A1	communal	OR	SSCA
Chegutu	23623	17340.00	8490	7139	1711	1057	3257	3241	7572	850	1363
Hurungwe	46809	57263.00	28148	23196	5919	420	5311	8809	36416	5107	1200
Kariba	2450	5593.00	2328	2621	644	0	0	0	5593	0	0
Kadoma	43605	50751.00	24895	20572	5284	4720	5914	6288	20665	12327	837
Zvimba	33485	32945.00	17613	13185	2147	1785	9495	9131	10384	640	1510
Makonde	40622	31018.00	10651	16276	4091	512	13022	10114	5171	580	1619
Total	190594	194910	92125	82989	19796	8494	36999	37583	85801	19504	6529
Sorghum											
Chegutu	938	426.00	144	141	141	0	123	58	68	177	0
Hurungwe	698	4717.00	303	3064	1350	62	57	217	4243	126	12
Kariba	1045	7248.00	5278	1602	368	0	0	0	7248	0	0
Kadoma	2980	1929.00	1449	409	71	143	216	230	967	373	0
Zvimba	170	801.00	1	399	401	65	486.5	60.5	166	0	23
Makonde	77	391.00	80	229	82	5	197	77	83	11	18
Total	5908	15512	7255	5844	2413	275	1079.5	642.5	12775	687	53
Finger Millet											
Chegutu	131	104.00	64	33	7	0	5	10	87	2	0
Hurungwe	251	310.00	121	153	36	0	2	46	255	4	3
Kariba	0	417.00	160	197	60	0	0	0	417	0	0
Kadoma	124	139.00	41	94	4	0	0	44	92	3	0
Zvimba	280	229.00	229	0	0	0	0	18	209	0	2
Makonde	25	53.00	48	5	0	0	2	2	40	8	1
Total	811	1252	663	482	107	0	9	120	1100	17	6
Pearl Millet											
Chegutu	0	15.00	10	4	1	0	1	1	11	2	0
Hurungwe	5	400.00	0	400	0	0	0	0	400	0	0
Kariba	127	1149.00	758	296	95	0	0	0	1149	0	0
Kadoma	13	189.00	178	6	5	0	0	0	10	77	102
Zvimba	0	2.00	2	0	0	0	0	2	0	0	0
Makonde	0	0.00	0	0	0	0	0	0	0	0	0
Total	145	1755	948	706	101	0	1	3	1570	79	102
Grand total	197458	213429	100991	90021	22417	8769	38088.5	38348.5	101246	20287	6690

Matabeleland North												
Maize												
District	Area planted by season (ha)		Area planted before 30/11/08	Area planted in Dec 2008	Area planted in Jan 2009	Area planted by sector (ha)						
	2007/08	2008/09				area	area	area	LSCF	A2	A1	communal
Bubi	18893	19404.00	6267.5	9047.5	4089	85	315	7201	6814	4654	335	
Binga	6250	7370.00	2521.5	2829	2019.5				7370			
Hwange	4329	5272.00	1375	2415	1482				5272			
Nkayi	14300	10733.00	5444	3922	1367				10733			
Umguza	8885	9065.00	2897	4112	2056	455	1174	2365	3792	1279		
Lupane	19762	16861.00	4327	8855	3679	0	0	856	14788	895	322	
Tsholotsho	3787	6463.30	1459	3058.6	1945.7			349	6062.3	52		
Total	76206	75168.3	24291	34239.1	16638.2	540	1489	10771	54831.3	6880	657	
Sorghum												
Bubi	3000	4869.00	1920	2266	683		47	1901	1112	1796	13	
Binga	9773	12479.00	5341	5564.5	1573.5				12479			
Hwange	4098	11275.00	4715	5326	1234				11275			
Nkayi	8550	2587.00	1530	877	180				2587			
Umguza	197	573.20	165.5	230.6	177.1		70	227	53.2	223		
Lupane	1950	8001.00	2054	4021	1926	0	0	517	7337	125	22	
Tsholotsho	15161	6208.00	1622	3091	1495			222	5957	29		
Total	42729	45992.2	17347.5	21376.1	7268.6	0	117	2867	40800.2	2173	35	
Finger Millet												
Bubi	0	4.00		3	1			4				
Binga	0	217.00	0.2	216	0.8				217			
Hwange	0	0.00	0	0	0				0			
Nkayi	0	124.00	80	39	5				124			
Umguza	0	5.00	5							5		
Lupane	0	513.00	242	218	53	0	0	0	513	0	0	
Tsholotsho	32	1.00	1						1			
Total	32	864	328.2	476	59.8	0	0	4	855	5	0	
Pearl Millet												
Bubi	3500	2653.00	1540	941	172			13	1670	970		
Binga	2495	7320.00	4398	2048	874				7320			
Hwange	5963	3338.00	1030	1782	526				3338			
Nkayi	1900	3054.00	2189	729	136				3054			
Umguza	66	152.00	73	65	14			45	20	87		
Lupane	3000	7150.00	4109	2402	639	0	0	446	6524	180	0	
Tsholotsho	12888	10565.00	4000	4473	2092			53	10497	15		
Total	29812	34232	17339	12440	4453	0	0	557	32423	1252	0	
Grand total	148779	156256.5	59305.7	68531.2	28419.6	540	1606	14199	128909.5	10310	692	

Matabeleland South												
Maize												
District	Area planted by season (ha)		Area planted before 30/11/08	Area planted in Dec 2008	Area planted in Jan 2009	Area planted by sector (ha)						
	2007/08	2008/09				area	area	area	LSCF	A2	A1	communal
Beitbridge	2469	4465	313	1606	2546	0	15	500	3950	0	0	
Mangwe	5026	3903	1112	1636	1156	30	40	230	3560	0	43	
Insiza	26089	28152	12142	7358	8652	123	2725	7357	9294	5404	3250	
Bulilima	12735	14841	4857	6966	3018	25	64	321	11861	2240	330	
Gwanda	22052	23034	8435	8250	6349	0	201	3066	19587	120	60	
Umzingwane	5505	6600	2562	2682	1356	889	156	1482	3343	730	0	
Matobo	21389	14923	4723	6460	3740	0	113	1453	13357	0	0	
Total	95266	95919	34144	34959	26816	1066	3314	14409	64952	8494	3683	
Sorghum												
Beitbridge	5446	10360	2688	4388	3284	0	6	199	10155	0	0	
Mangwe	8408	6635	2120	2658	1858	5	5	30	6585	0	10	
Insiza	1635	2120	1430	416	274	289	223	147	852	524	85	
Bulilima	8284	9871	3254	4871	1746	0	11	75	9496	264	25	
Gwanda	8591	10818	5156	3748	1914	0	62	703	10003	30	20	
Umzingwane	466	677	292	283	102	40	21	240	297	79	0	
Matobo	7478	8992	4173	3768	1051	0	114	305	8573	0	0	
Total	40307	49472	19113	20132	10228	334	442	1699	45961	897	140	
Finger Millet												
Beitbridge	0	0	0	0	0	0	0	0	0	0	0	
Mangwe	3	1	0	1	0	0	0	0	1	0	0	
Insiza	737	1111	748	355	8	0	36	83	962	5	25	
Bulilima	12	9	3	4	2	0	0	2	7	0	0	
Gwanda	294	220	220	0	0	0	0	20	200	0	0	
Umzingwane	72	91	41	31	19	0	0	5	82	4	0	
Matobo	4932	6916	2954	2833	1129	0	0	150	6766	0	0	
Total	6050	8347	3966	3224	1157	0	36	260	8017	9	25	
Pearl Millet												
Beitbridge	1970	4679	2443	1293	943	0	2	4	4674	0	0	
Mangwe	8362	8785	2602	3374	2810	0	5	40	8735	0	5	
Insiza	277	606	545	55	6	0	128	28	300	100	50	
Bulilima	14876	13662	5866	5950	1846	0	0	50	13007	536	69	
Gwanda	5410	7216	4031	2615	570	0	21	194	7001	0	0	
Umzingwane	138	192	44	124	24	0	1	21	165	5	0	
Matobo	0	270	83	133	54	0	0	10	260	0	0	
Total	31032	35410	15614	13543	6253	0	156	346	34143	641	124	
Grand total	172655	189148	72837	71858	44454	1400	3948	16715	153073	10041	3972	

Midlands												
Maize												
District	Area planted by season (ha)		Area planted before 30/11/08	Area planted in Dec 2008	Area planted in Jan 2009	Area planted by sector (ha)						
	2007/08	2008/09				area	area	area	LSCF	A2	A1	communal
Chirumanzi	21540	27724	13045	11424	3255	40	923	8353	16498	1910	0	
Gweru	19121	25541	11808	10726	3008	2273	2274	8484	9398	1754	1358	
Gokwe N	63804	72693	34478	27674	10542	0	0	0	66336	4545	1812	
Mberengwa	18155	28864	14037	9765	5062	0	0	4081	24025	758	0	
Shurugwi	10875	16882	7825	7312	1746	70	200	3699	5005	6834	1074	
Gokwe S	76540	57799	26098	25222	6479	0	0	0	54599	0	3200	
Kwekwe	69672	58097	17657	31668	8772	3304	2167	12795	33837	3762	2232	
Zvishavane	14590	12865	3324	6470	3070			28	3819	8227	782	
Total	294297	300464	128272	130261	41932	5687	5592	41231	217924	20345	9685	
Sorghum												
Chirumanzi	3163	4129	1075	2494	560	0	2	3	4123	1	0	
Gweru	1160	825	260	336	229	64	71	90	519	28	53	
Gokwe N	10793	19403	9083	7536	2784	0	0	0	18635	368	400	
Mberengwa	5854	9000	6007	2404	589	0	0	576	8257	167	0	
Shurugwi	1232	2179	663	1325	191	0	11	84	925	805	355	
Gokwe S	23415	15317	5495	9822	0	0	0	0	15297	0	20	
Kwekwe	5666	4308	1201	2425	682	47	41	227	3524	403	66	
Zvishavane	1320	9339	4313	2892	2134			14	3587	5655	80	
Total	52603	64499	28096	29233	7169	111	139	4567	56934	1851	897	
Finger Millet												
Chirumanzi	3601	3003	2276	663	64	0	12	236	2560	195	0	
Gweru	415	478	251	74	154	30	43	72	111	52	170	
Gokwe N	769	568	363	177	28	0	0	0	466	62	40	
Mberengwa	4894	5973	4670	1303	0	0	0	157	5665	151	0	
Shurugwi	1469	1467	1222	214	31	0	9	80	414	811	157	
Gokwe S	3187	1954	1646	308	0	0	0	0	1948	0	6	
Kwekwe	1018	936	644	257	35	0	3	68	806	50	9	
Zvishavane	19	931	708	203	20	0	0	39	870	22	0	
Total	15371	15309	11780	3198	331	30	67	653	12839	1343	382	
Pearl Millet												
Chirumanzi	1421	880	637	180	63	3	165	33	675	5	0	
Gweru	41	43	24	15	4	0	0	35	1	7	0	
Gokwe N	885	428	299	107	21	0	0	0	414	2	12	
Mberengwa	3300	5594	4293	1111	190	0	0	445	4913	236	0	
Shurugwi	474	668	229	309	130	0	0	5	234	304	124	
Gokwe S	7780	6236	4817	1419	0	0	0	0	6231	0	5	
Kwekwe	2057	1768	1194	522	52	0	2	35	1697	21	10	
Zvishavane	16	1397	796	334	268	0	0	56	1340	0	1	
Total	15974	17013	12288	3996	729	3	167	609	15504	576	152	
Grand total	378245	397285	180436	166688	50161	5831	5965	47060	303202	24114	11117	

Masvingo											
Maize											
District	Area planted by season (ha)		Area planted before 30/11/08	Area planted in Dec 2008	Area planted in Jan 2009	Area planted by sector (ha)					
	2007/08	2008/09				area (Ha)	area (Ha)	area (Ha)	LSCF	A2	A1
Bikita	36,023	23,966	4,627	14,772	4,567				20,801	2,055	1,110
Chiredzi	20,341	27,635	3,190	12,263	12,182	70	402	10,368	14,899	850	1,047
Chivi	25,508	27,275	7,150	11,893	8,232				26,276	578	421
Gutu	48,312	35,549	9,940	17,204	8,405		365	7,739	24,324	1,236	1,885
Masvingo	52,615	48,772	16,985	20,844	10,943	2,700	245	6,914	23,645	11,373	3,895
Mwenezi	5,318	14,658	3,830	6,645	4,183		22	9,856	4,633	147	
Zaka	41,600	29,604	7,567	14,567	7,470			63	28,641	900	
Total	229,717	207,458	53,289	98,188	55,981	2,770	1,034	34,940	143,218	17,139	8,358
Sorghum											
Bikita	3,412	9,668	6,159	3,509					8,566	900	202
Chiredzi	28,315	25,014	8,647	11,455	4,912			8,589	15,625		800
Chivi	6,220	17,410	7,019	7,333	3,058				16,740	50	620
Gutu	6,199	7,039	2,770	2,608	1,661			2	6,982	4	51
Masvingo	1,912	2,410	753	1,121	536	30	20	298	948	662	452
Mwenezi	4,836	10,931	5,638	3,163	2,130			7,782	3,075	74	
Zaka	190	2,628	1,253	1,069	306			85	2,463	80	
Total	51,084	75,100	32,239	30,258	12,603	30	20	16,756	54,399	1,770	2,125
Finger Millet											
Bikita	10,705	11,018	8,733	2,285					9,366	750	902
Chiredzi	275	1,799	452	1,084	263			1,450	39		310
Chivi	2,056	4,840	3,364	1,476					4,501	24	315
Gutu	15,895	15,052	9,990	4,483	579		1,550	1,885	10,539	500	578
Masvingo	3,823	5,219	4,141	985	93	15	10	42	4,046	683	423
Mwenezi	654	1,648	1,031	445	172			1,032	578	38	
Zaka	5,120	6,929	5,551	1,219	159				6,929		
Total	38,528	46,505	33,262	11,977	1,266	15	1,560	4,409	35,998	1,995	2,528
Pearl Millet											
Bikita	2495	5,898	4688	1210					5489	400	9
Chiredzi	1141	3,425	1262	1846	317			2310	815	0	300
Chivi	3034	4,231	2991	1240					3950	51	230
Gutu	10421	4,134	2447.9	1513.87	172				4122.77		11
Masvingo	540	1,636	1055.4	541.5	39			9	786	591	249.9
Mwenezi	5377	12,001	6634	3394	1973			5573	5961	467	
Zaka	150	839	419	360	60			20	799	20	
Total	23,158	32,164	19,497	10,105	2,561	0	0	7,912	21,923	1,529	800
Grand total	342,487	361,227	138,288	150,528	72,411	2,815	2,614	64,017	255,538	22,433	13,811